

**DURO**  
BAG MFG. CO.  
1 Duro Way  
Walton, KY 41094  
CREATED BY: B. Wallrawe  
TECHNICAL:  
Starting Web: 39.25" Finished Web 39.00"

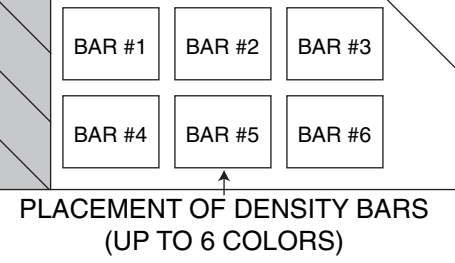
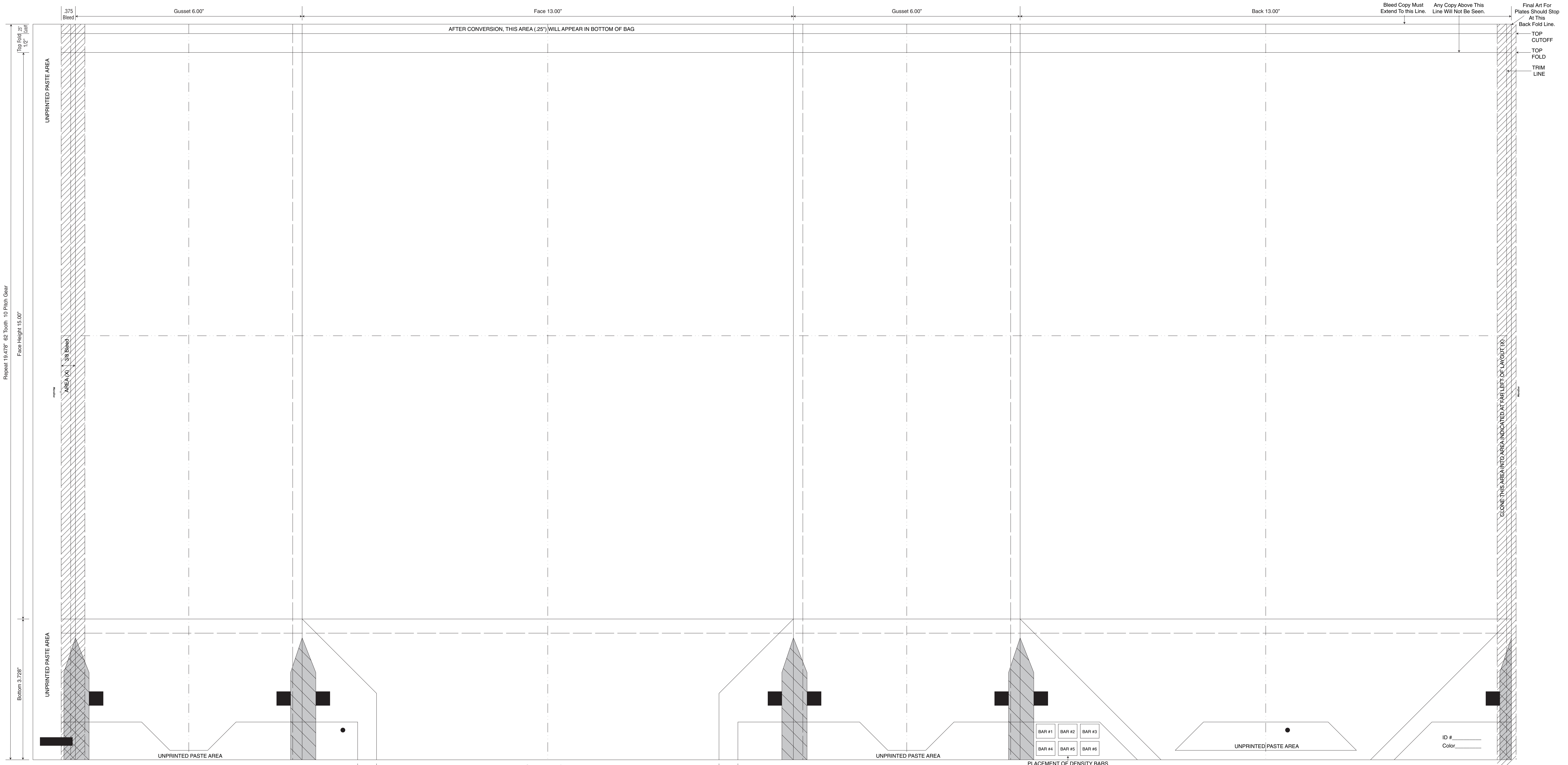
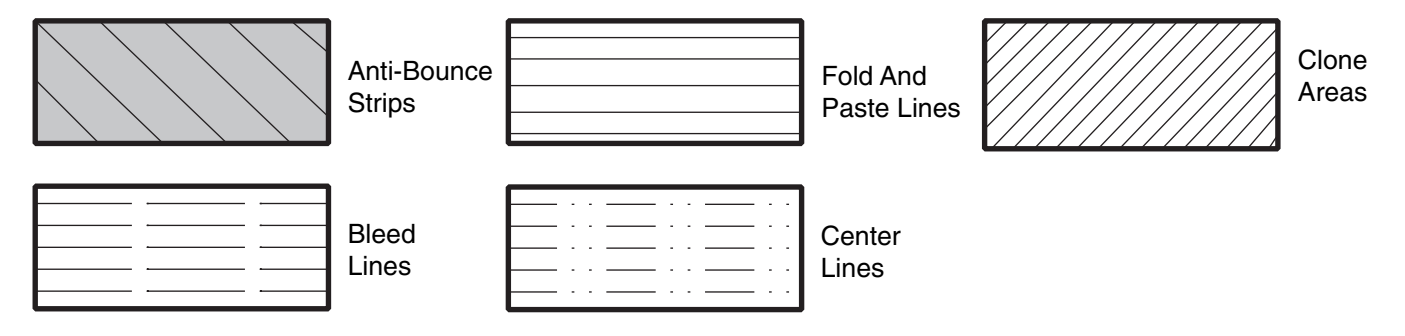
DESIGN GROUP:  
Shopper Series  
**Ultra Modular Traveler**  
13 x 6 x 15  
DATE: 10/14/04 SCALE: FULL

This .020" Microdot Is For Flexographic Printing Only. It Should Be Placed On Every Color At The Center Of Largest Copy (Top To Bottom). The Left Microdot Gets Placed 1/64" Inside The Paste Area. The Right Microdot Gets Placed 1/64" Outside The Right Side Back Fold Edge Line.

**BORDER DESIGNS**  
Because Of Machine Movement In Bag Conversion, Copy Should Be Placed At Least 1/4" From Fold Lines Or Edges. In The Top Area, Use 1/2" Bleed. Border Designs Should Be Kept 1/2" From Fold Edges, Top Cutoff And Bottom Fold.

PLEASE NOTE: All Screen, Half-Tones And Process Jobs Must Be Reviewed By Duro's Graphic Printing Division Before Preparing Art.  
**This Proof is For Copy, Elements And Position Only. NOT FOR COLOR APPROVAL.**

Fill All 5 Anti-Bounce Area With 40% Screen In All Colors Containing Screens  
Full Panel Print Must Bleed Into Top & Bottom Panel Of Bag, Which Is Indicated On Template



ID # \_\_\_\_\_  
Color \_\_\_\_\_

**This Proof is For Copy, Elements And Position Only. NOT FOR COLOR APPROVAL.**