



1 Duro Way
Walton, KY 41094

CREATED BY: B. Wallrawe

TECHNICAL:

Starting Web: 39.25" Finished Web 39.00"

DESIGN GROUP:
Shopper Series

JV Slit Top Traveler
13 x 6 x 15 3/4

DATE: 10/14/04 SCALE: FULL

This .020" Microdot Is For Flexographic Printing Only. It Should Be Placed On Every Color At The Center Of Largest Copy (Top To Bottom). The Left Microdot Gets Placed 1/64" Inside The Paste Area. The Right Microdot Gets Placed 1/64" Outside The Right Side Back Fold Edge Line.

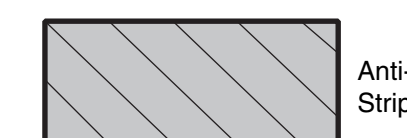
BORDER DESIGNS
Because Of Machine Movement In Bag Conversion, Copy Should Be Placed At Least 1/4" From Fold Lines Or Edges. In The Top Area, Use 1/2" Bleed. Border Designs Should Be Kept 1/2" From Fold Edges, Top Cutoff And Bottom Fold.

PLEASE NOTE: All Screen, Half-Tones And Process Jobs Must Be Reviewed By Duro's Graphic Printing Division Before Preparing Art.

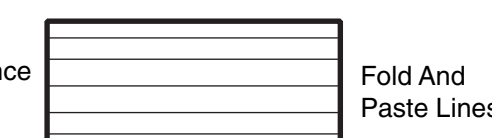
This Proof is For Copy, Elements And Position Only. NOT FOR COLOR APPROVAL.

Fill All 5 Anti-Bounce Area With 40% Screen In All Colors Containing Screens

Full Panel Print Must Bleed Into Top & Bottom Panel Of Bag, Which Is Indicated On Template



Anti-Bounce Strips



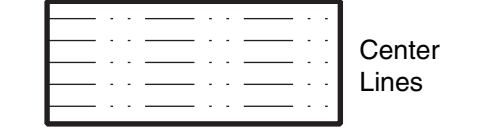
Fold And Paste Lines



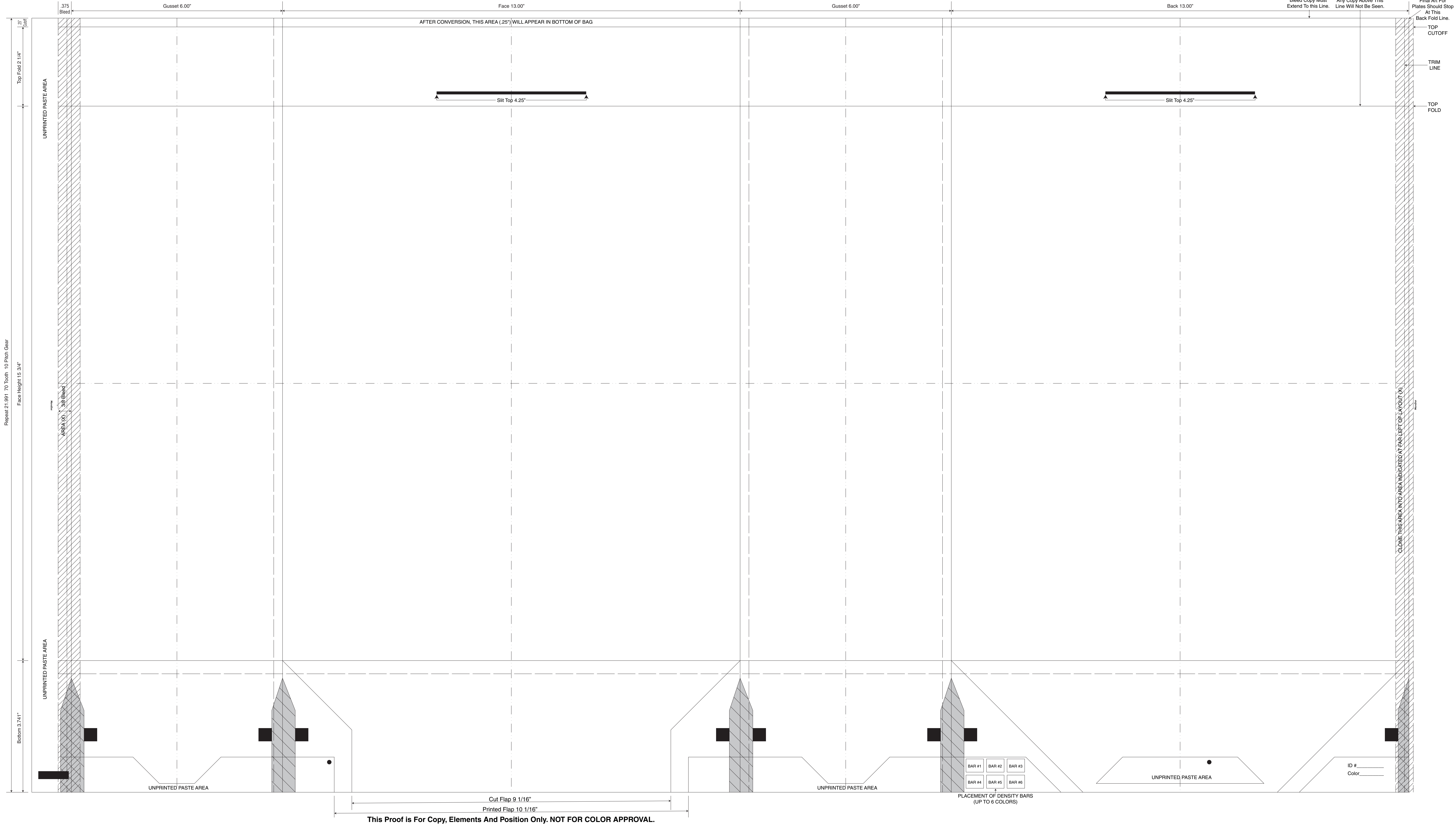
Clone Areas



Bleed Lines



Center Lines



Repeat 21.991 70 Teeth 10 Pitch Clear
Face Height 15.34"

Top Fold 2 1/4"

Bottom 3 7/4"

UNPRINTED PASTE AREA

UNPRINTED PASTE AREA

CLONE THIS AREA INTO AREA INDICATED AT FAR LEFT OF LAYOUT (X)

Final Art For Plates Should Stop At This Back Fold Line.
TOP CUTOFF
TRIM LINE
TOP FOLD

Bleed Copy Must Extend To This Line. Any Copy Above This Line Will Not Be Seen.

AFTER CONVERSION, THIS AREA (.25") WILL APPEAR IN BOTTOM OF BAG

Slit Top 4.25"

Slit Top 4.25"

UNPRINTED PASTE AREA

UNPRINTED PASTE AREA

UNPRINTED PASTE AREA

BAR #1	BAR #2	BAR #3
BAR #4	BAR #5	BAR #6

PLACEMENT OF DENSITY BARS (UP TO 6 COLORS)

ID # _____
Color _____

Cut Flap 9 1/16"
Printed Flap 10 1/16"

This Proof is For Copy, Elements And Position Only. NOT FOR COLOR APPROVAL.