

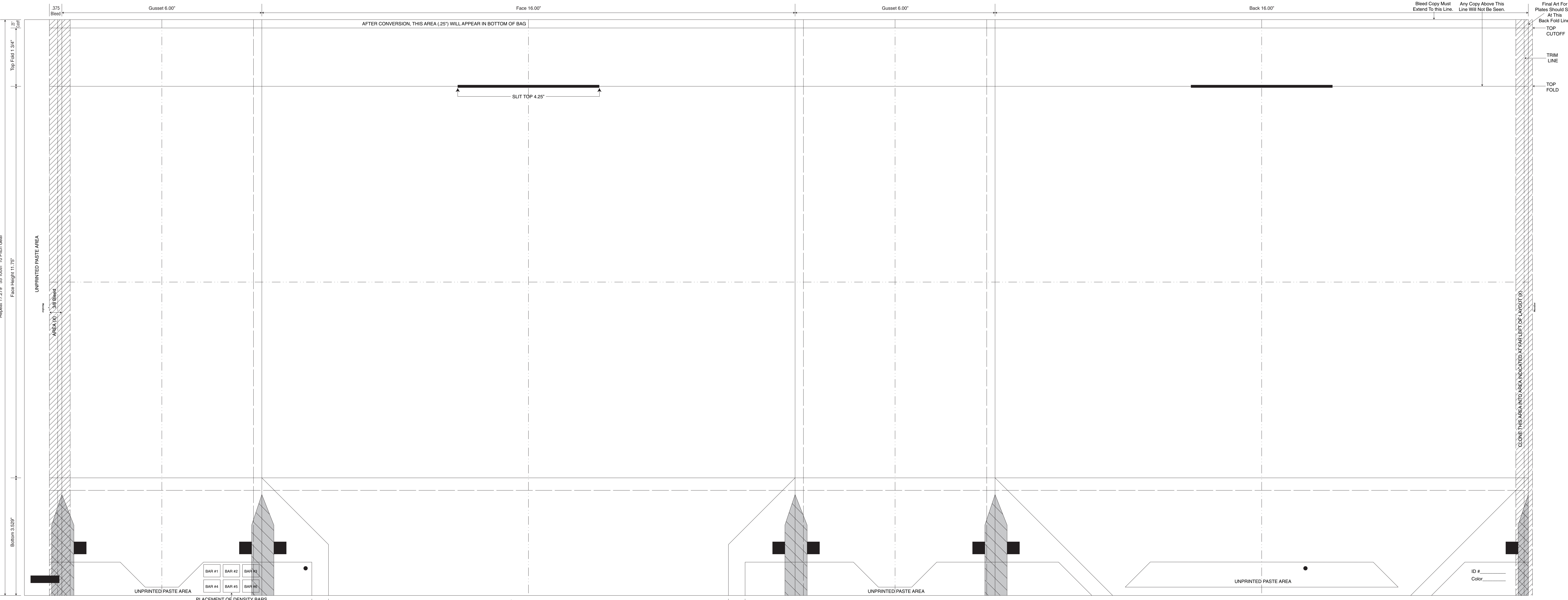
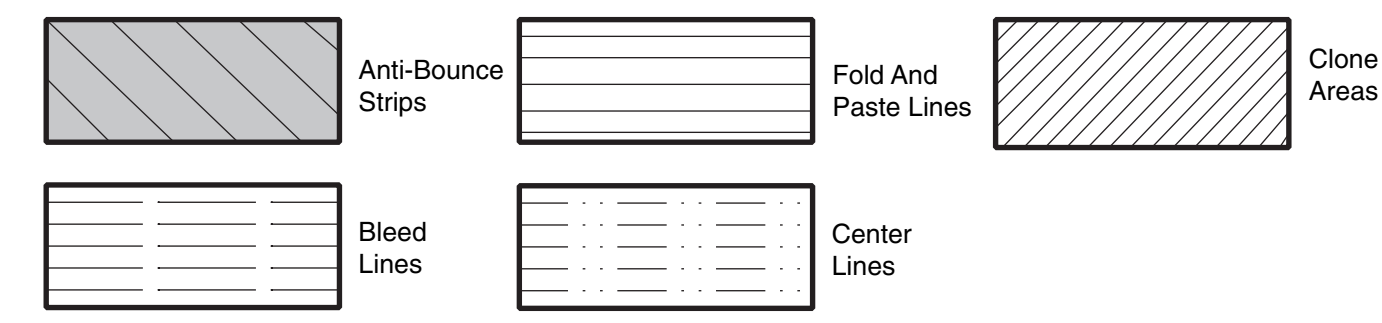


1 Duro Way  
Walton, KY 41094  
CREATED BY: B. Wallrawe  
TECHNICAL:  
Starting Web: 45.25" Finished Web 45.00"

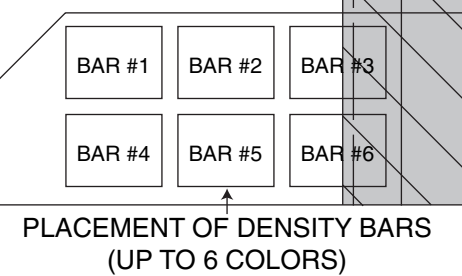
DESIGN GROUP:  
Shopper Series  
**Modular Macrame**  
**Slit Top Tote**  
**16 x 6 x 11.75**  
DATE: 4/30/04 SCALE: FULL

**PLEASE NOTE:** All Screen, Half-Tones And Process Jobs Must Be Reviewed By Duro's Graphic Printing Division Before Preparing Art.  
**This Proof is For Copy, Elements And Position Only. NOT FOR COLOR APPROVAL.**

Fill All 5 Anti-Bounce Area With 40% Screen In All Colors Containing Screens  
Full Panel Print Must Bleed Into Top & Bottom Panel Of Bag, Which is Indicated On Template



Repeat 17.279\" 55 Teeth, 10 Pitch Gear  
Face Height 11.75\"



Cut Flap 12.00\"  
Printed Flap 13.00\"  
**This Proof is For Copy, Elements And Position Only. NOT FOR COLOR APPROVAL.**

Bleed Copy Must Extend To this Line. Any Copy Above This Line Will Not Be Seen.  
Final Art For Plates Should Stop At This Back Fold Line  
TOP CUTOFF  
TRIM LINE  
TOP FOLD  
CLONE THIS AREA INTO AREA INDICATED AT FAR LEFT OF LAYOUT (X)  
ID # \_\_\_\_\_  
Color \_\_\_\_\_