



1 Duro Way
Walton, KY 41094

CREATED BY: B. Wallrawe

TECHNICAL:

Starting Web: 26.25" Finished Web 26.00"

DESIGN GROUP:
Shopper Series

Ultra Modular Tempo
8 x 4 1/2 x 9 7/8

DATE: 9/9/04

SCALE: FULL

This .020" Microdot Is For Flexographic Printing Only. It Should Be Placed On Every Color At The Center Of Largest Copy (Top To Bottom). The Left Microdot Gets Placed 1/64" Inside The Paste Area. The Right Microdot Gets Placed 1/64" Outside The Right Side Back Fold Edge Line.

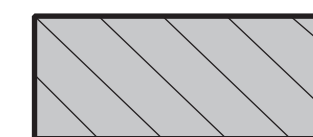
BORDER DESIGNS
Because Of Machine Movement In Bag Conversion, Copy Should Be Placed At Least 1/4" From Fold Lines Or Edges. In The Top Area, Use 1/2" Bleed. Border Designs Should Be Kept 1/2" From Fold Edges, Top Cutoff And Bottom Fold.

PLEASE NOTE: All Screen, Half-Tones And Process Jobs Must Be Reviewed By Duro's Graphic Printing Division Before Preparing Art.

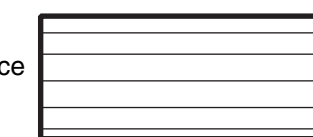
This Proof is For Copy, Elements And Position Only. NOT FOR COLOR APPROVAL.

Fill All 5 Anti-Bounce Area With 40% Screen In All Colors Containing Screens

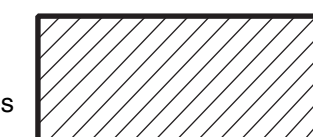
Full Panel Print Must Bleed Into Top & Bottom Panel Of Bag, Which Is Indicated On Template



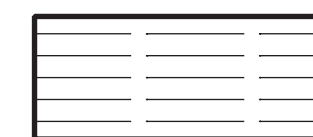
Anti-Bounce Strips



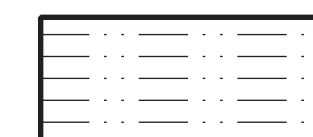
Fold And Paste Lines



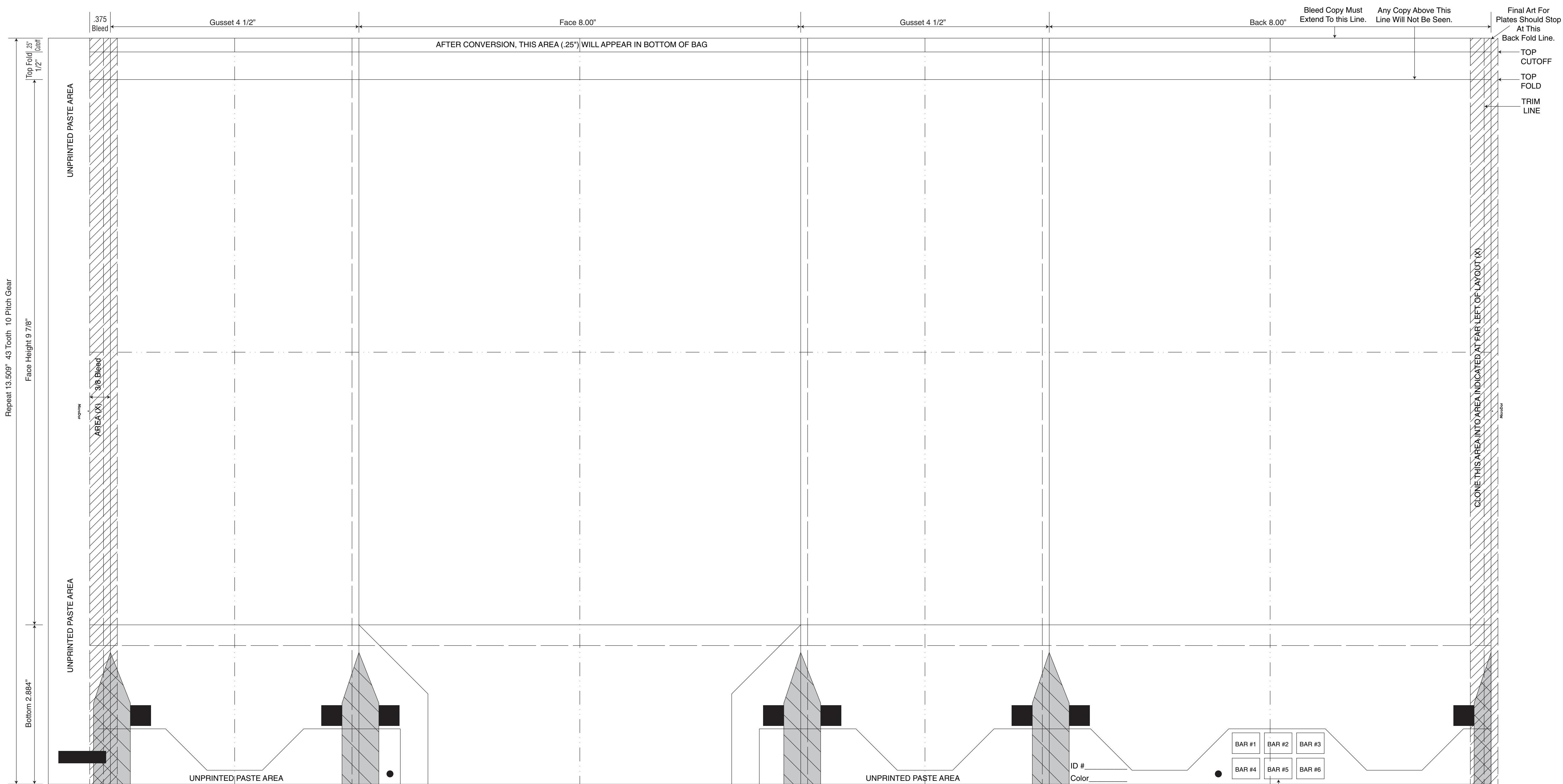
Clone Areas



Bleed Lines



Center Lines



Repeat 13.509" 43 Tooth 10 Pitch Gear

Face Height 9 7/8"

Bottom 2.884"

Top Fold .25" 1/2" (offset)

.375 Bleed

Gusset 4 1/2"

Face 8.00"

Gusset 4 1/2"

Back 8.00"

AFTER CONVERSION, THIS AREA (.25") WILL APPEAR IN BOTTOM OF BAG

Bleed Copy Must Extend To this Line.
Any Copy Above This Line Will Not Be Seen.
Final Art For Plates Should Stop At This Back Fold Line.
TOP CUTOFF
TOP FOLD
TRIM LINE

CLONE THIS AREA INTO AREA INDICATED AT FAR LEFT OF LAYOUT (X)

AREA (X)

UNPRINTED PASTE AREA

UNPRINTED PASTE AREA

UNPRINTED PASTE AREA

ID #
Color



PLACEMENT OF DENSITY BARS (UP TO 6 COLORS)

Cut Flap 5 1/2"
Printed Flap 6 1/2"

This Proof is For Copy, Elements And Position Only. NOT FOR COLOR APPROVAL.