



1 Duro Way
Walton, KY 41094

CREATED BY: B. Wallrawe

TECHNICAL:

Starting Web: 26 1/4" Finished Web 26"

DESIGN GROUP:
Shopper Series

Modular Macrame Slit Top Tempo 8 x 4 1/2 x 9 7/8

DATE: 10/18/05

SCALE: FULL

This .020" Microdot Is For Flexographic Printing Only. It Should Be Placed On Every Color At The Center Of Largest Copy (Top To Bottom). The Left Microdot Gets Placed 1/64" Inside The Paste Area. The Right Microdot Gets Placed 1/64" Outside The Right Side Back Fold Edge Line.

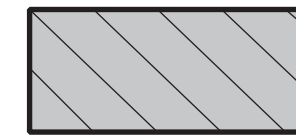
BORDER DESIGNS
Because Of Machine Movement In Bag Conversion, Copy Should Be Placed At Least 1/4" From Fold Lines Or Edges. In The Top Area, Use 1/2" Bleed. Border Designs Should Be Kept 1/2" From Fold Edges, Top Cutoff And Bottom Fold.

PLEASE NOTE: All Screen, Half-Tones And Process Jobs Must Be Reviewed Bt Duro's Graphic Printing Division Before Preparing Art.

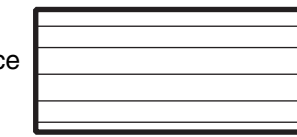
**This Proof is For Copy,
Elements And Position Only.
NOT FOR COLOR APPROVAL.**

Fill All 5 Anti-Bounce Area With 40% Screen In All Colors Containing Screens

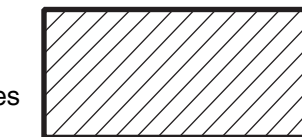
Full Panel Print Must Bleed Into Top & Bottom Panel Of Bag, Which Is Indicated On Template



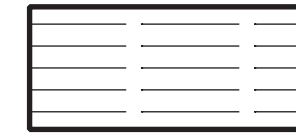
Anti-Bounce Strips



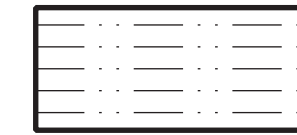
Fold And Paste Lines



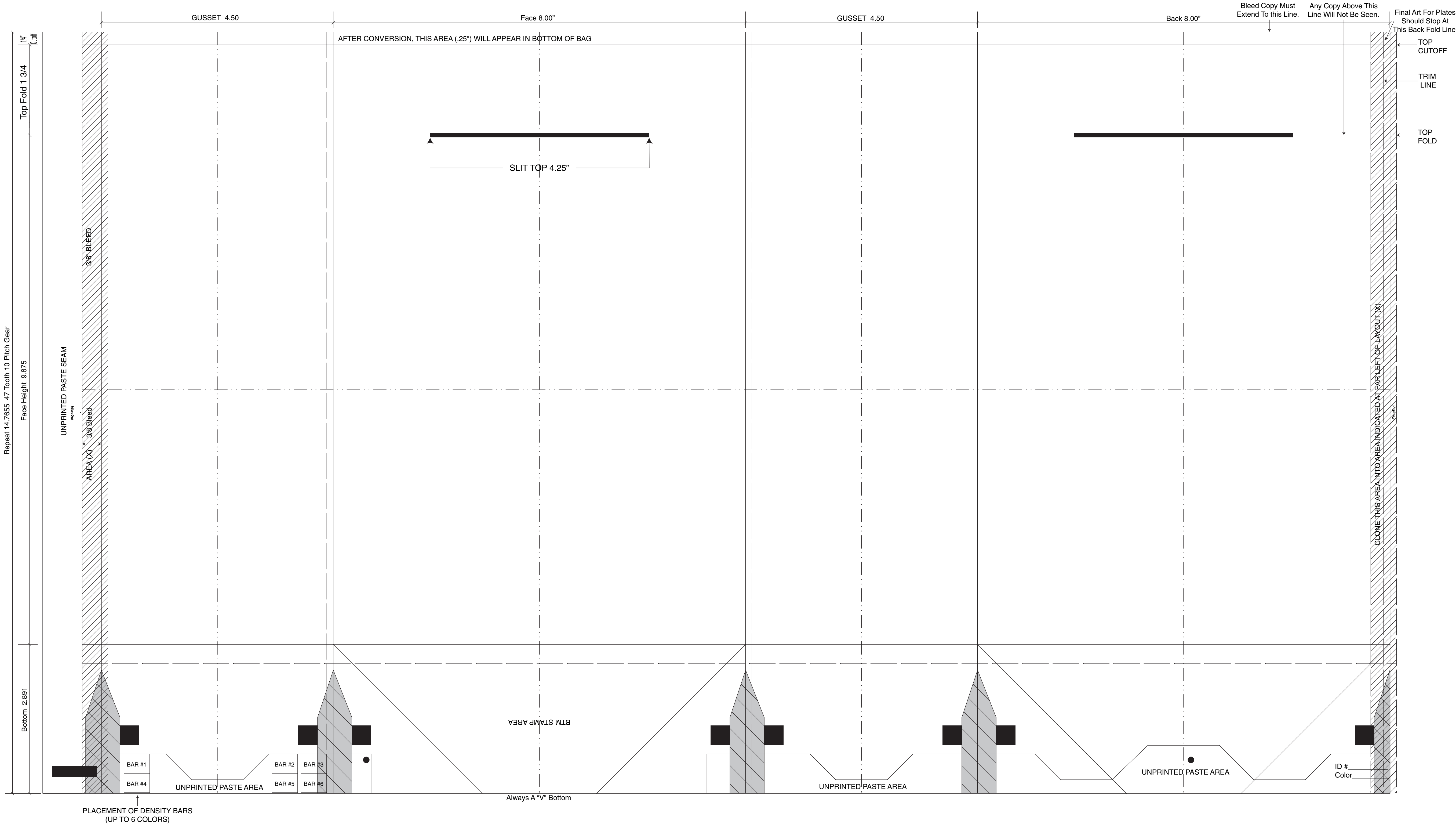
Clone Areas



Bleed Lines



Center Lines



Repeat 14.7655 47 Tooth 10 Pitch Gear

Face Height 9.875

Bottom 2.891

PLACEMENT OF DENSITY BARS
(UP TO 6 COLORS)

Always A "V" Bottom

Final Art For Plates
Should Stop At
This Back Fold Line

TOP
CUTOFF

TRIM
LINE

TOP
FOLD

CLONE THIS AREA INTO AREA INDICATED AT FAR LEFT OF LAYOUT (X)

ID #

Color