



1 Duro Way
Walton, KY 41094
CREATED BY: B. Walkawe
TECHNICAL:
Starting Web: 49.25" Finished Web 49.00"

DESIGN GROUP:
Shopper Series
Super Royal
14 x 10 x 15 3/4
DATE: 10/14/05 SCALE: FULL

This .020" Microdot Is For Flexographic Printing Only. It Should Be Placed On Every Color At The Center Of Largest Copy (Top To Bottom). The Left Microdot Gets Placed 1/64" Inside The Paste Area. The Right Microdot Gets Placed 1/64" Outside The Right Side Back Fold Edge Line.

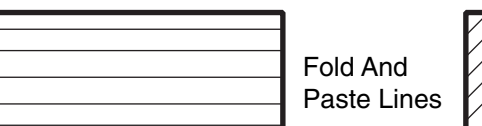
BORDER DESIGNS
Because Of Machine Movement In Bag Conversion, Copy Should Be Placed At Least 1/4" From Fold Lines Or Edges. In The Top Area, Use 1/2" Bleed. Border Designs Should Be Kept 1/2" From Fold Edges, Top Cutoff And Bottom Fold.

PLEASE NOTE: All Screen, Half-Tones And Process Jobs Must Be Reviewed By Duro's Graphic Printing Division Before Preparing Art.
This Proof is For Copy, Elements And Position Only. NOT FOR COLOR APPROVAL.

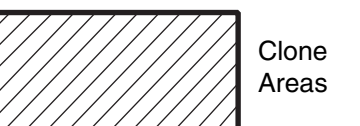
Fill All 5 Anti-Bounce Area With 40% Screen In All Colors Containing Screens
Full Panel Print Must Bleed Into Top & Bottom Panel Of Bag, Which Is Indicated On Template



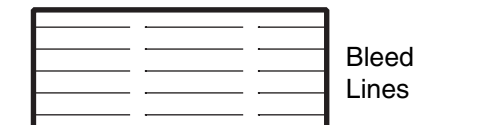
Anti-Bounce Strips



Fold And Paste Lines



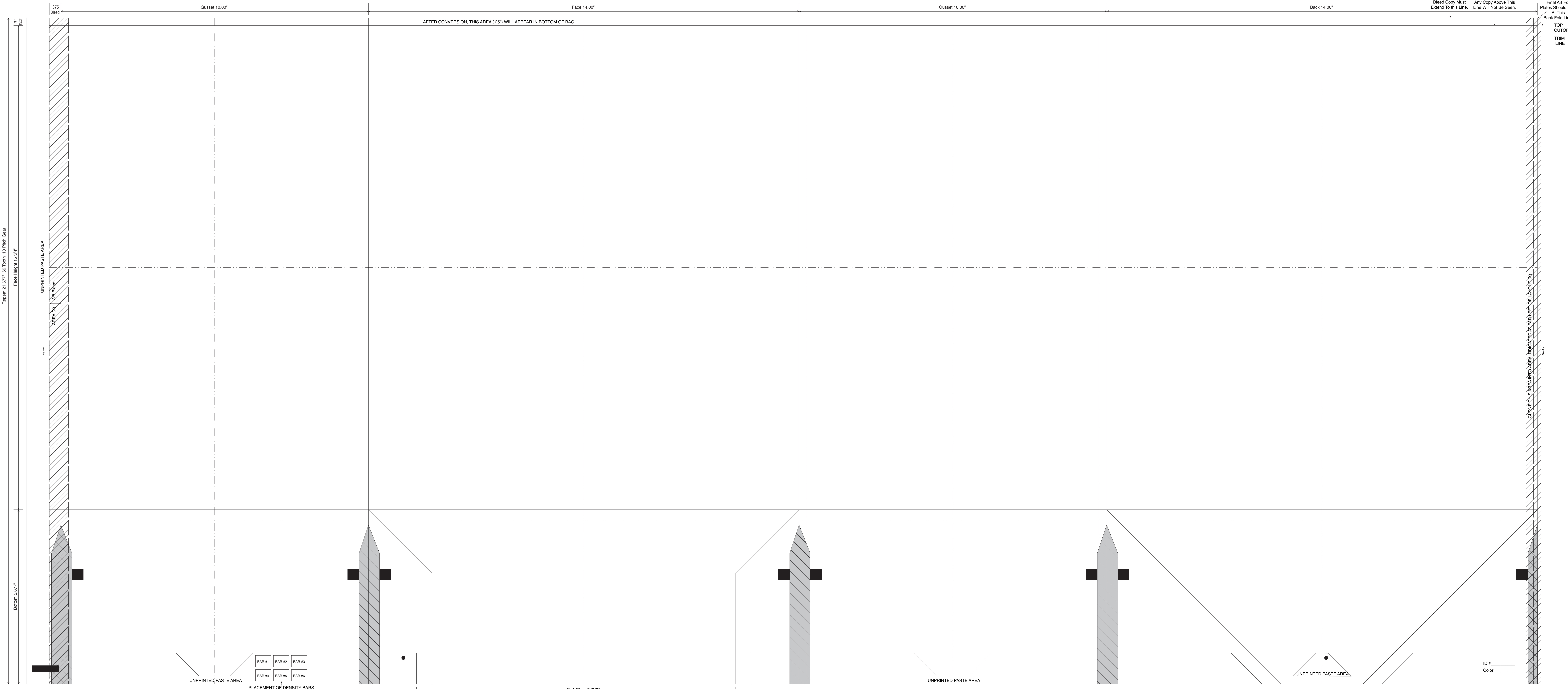
Clone Areas



Bleed Lines



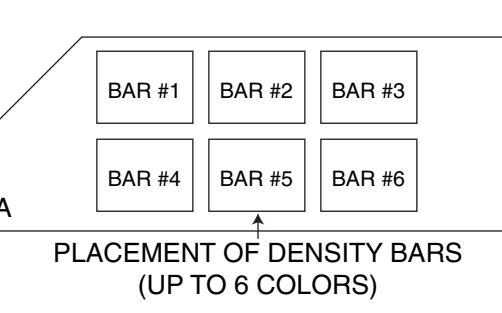
Center Lines



Repeat 21.677" 60 Tooth, 10 Pitch Gear
Face Height 1.5 3/4"

Bottom 5.677"

Bleed Copy Must Extend To This Line.
Any Copy Above This Line Will Not Be Seen.
Final Art For Plates Should Stop At This Back Fold Line.
TOP CUTOFF TRIM LINE



Cut Flap 9 7/8"
Printed Flap 10 7/8"

This Proof is For Copy, Elements And Position Only. NOT FOR COLOR APPROVAL.

ID # _____
Color _____