



1 Duro Way
Walton, KY 41094
CREATED BY: B. Wallrawe
TECHNICAL:
Starting Web: 45.25" Finished Web 45.00"

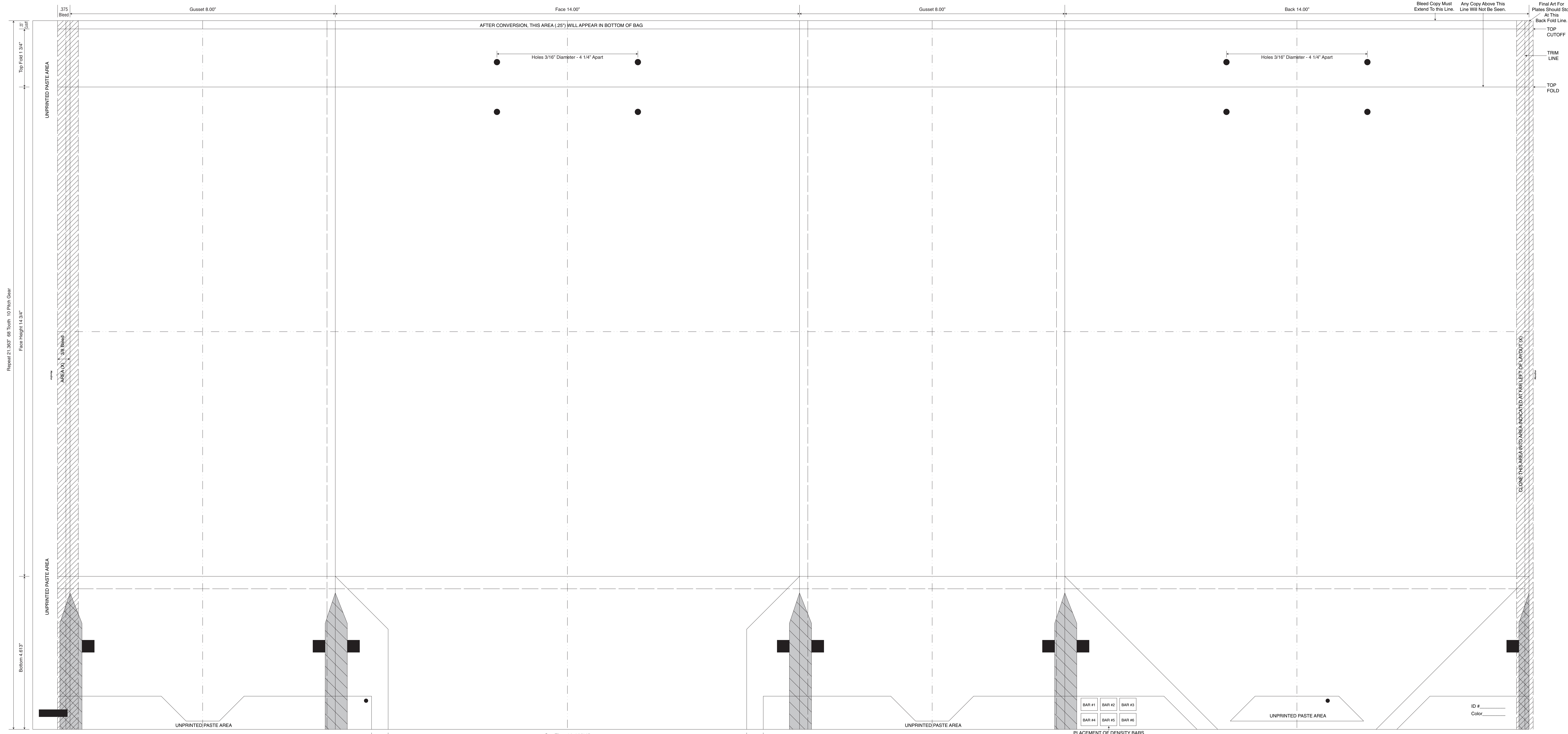
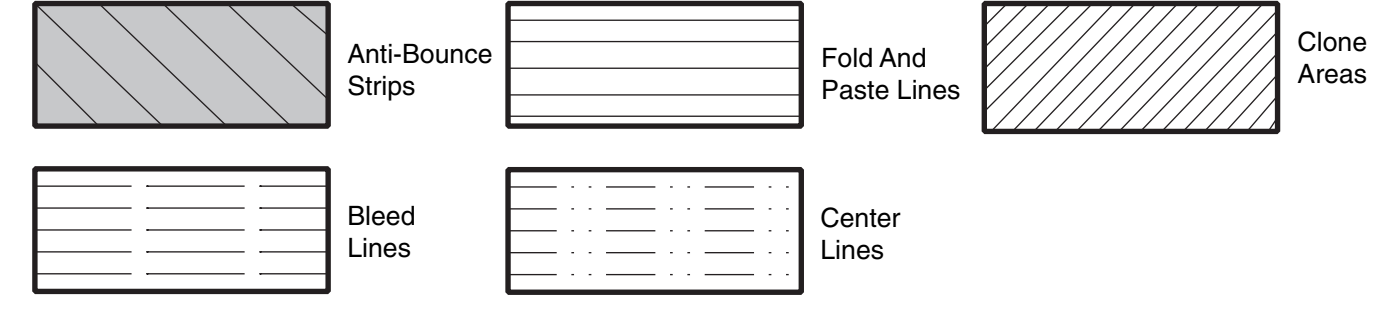
DESIGN GROUP:
Shopper Series
Macrame Royal
14 x 8 x 14 3/4
DATE: 09/8/04 SCALE: FULL

This .020" Microdot Is For Flexographic Printing Only. It Should Be Placed On Every Color At The Center Of Largest Copy (Top To Bottom). The Left Microdot Gets Placed 1/64" Inside The Paste Area. The Right Microdot Gets Placed 1/64" Outside The Right Side Back Fold Edge Line.

BORDER DESIGNS
Because Of Machine Movement In Bag Conversion, Copy Should Be Placed At Least 1/4" From Fold Lines Or Edges. In The Top Area, Use 1/2" Bleed. Border Designs Should Be Kept 1/2" From Fold Edges, Top Cutoff And Bottom Fold.

PLEASE NOTE: All Screen, Half-Tones And Process Jobs Must Be Reviewed Et Duro's Graphic Printing Division Before Preparing Art.
This Proof is For Copy, Elements And Position Only. NOT FOR COLOR APPROVAL.

Fill All 5 Anti-Bounce Area With 40% Screen In All Colors Containing Screens
Full Panel Print Must Bleed Into Top & Bottom Panel Of Bag, Which Is Indicated On Template



Cut Flap 10 13/16"
Printed Flap 11 13/16"
This Proof is For Copy, Elements And Position Only. NOT FOR COLOR APPROVAL.

Repeat 21.363" 68 Tooth 10 Pitch Gear
Face Height 14.3/4"

CLONE THIS AREA INTO AREA INDICATED AT FAR LEFT OF LAYOUT (X)