



1 Duro Way
Walton, KY 41094

CREATED BY: B. Wallrawe

TECHNICAL:

Starting Web: 31.25" Finished Web 31.00"

DESIGN GROUP:
Shopper Series

Missy
10 x 5 x 13

DATE: 10/18/05

SCALE: FULL

This .020" Microdot Is For Flexographic Printing Only.
It Should Be Placed On Every Color At The
Center Of Largest Copy (Top To Bottom). The Left Microdot
Gets Placed 1/64" Inside The Paste Area.
The Right Microdot Gets Placed 1/64" Outside
The Right Side Back Fold Edge Line.

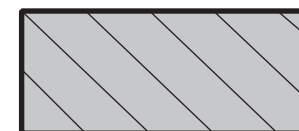
BORDER DESIGNS
Because Of Machine Movement In Bag
Conversion, Copy Should Be Placed At
Least 1/4" From Fold Lines Or Edges.
In The Top Area, Use 1/2" Bleed.
Border Designs Should Be Kept 1/2" From
Fold Edges, Top Cutoff And Bottom Fold.

PLEASE NOTE: All Screen, Half-Tones And
Process Jobs Must Be Reviewed Bt Duro's
Graphic Printing Division Before Preparing Art.

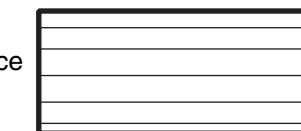
**This Proof is For Copy,
Elements And Position Only.
NOT FOR COLOR APPROVAL.**

Fill All 5 Anti-Bounce Area With
40% Screen In All Colors
Containing Screens

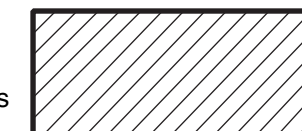
Full Panel Print
Must Bleed Into
Top & Bottom Panel Of Bag,
Which Is Indicated On Template



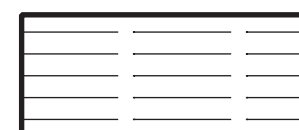
Anti-Bounce
Strips



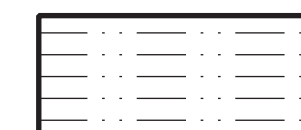
Fold And
Paste Lines



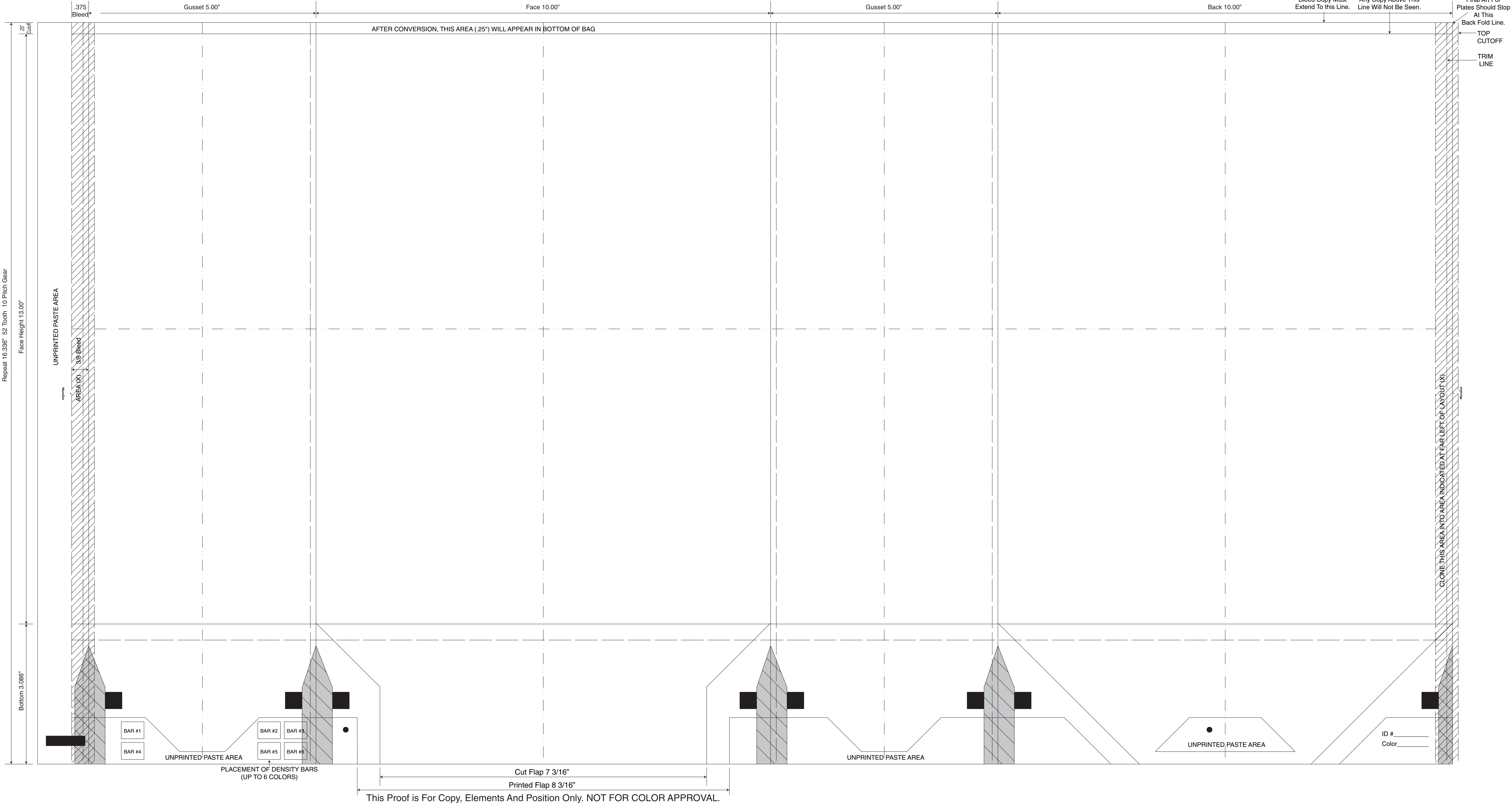
Clone
Areas



Bleed
Lines



Center
Lines



This Proof is For Copy, Elements And Position Only. NOT FOR COLOR APPROVAL.

Repeat 16.336" 52 Tooth 10 Pitch Gear
Face Height 13.00"

UNPRINTED PASTE AREA

AREA (X) 3/8" Bleed

CLONE THIS AREA INTO AREA INDICATED AT FAR LEFT OF LAYOUT (X)

BAR #1
BAR #4

BAR #2
BAR #3
BAR #5
BAR #6

UNPRINTED PASTE AREA

PLACEMENT OF DENSITY BARS
(UP TO 6 COLORS)

UNPRINTED PASTE AREA

UNPRINTED PASTE AREA

ID #
Color