



1 Duro Way  
Walton, KY 41094  
CREATED BY: B. Wallrawe  
TECHNICAL:  
Starting Web: 31.25" Finished Web 31.00"

DESIGN GROUP:  
Shopper Series

**Ultra Modular Missy**  
10 x 5 x 12 3/4

DATE: 10/18/05 SCALE: FULL

This .020" Microdot Is For Flexographic Printing Only. It Should Be Placed On Every Color At The Center Of Largest Copy (Top To Bottom). The Left Microdot Gets Placed 1/64" Inside The Paste Area. The Right Microdot Gets Placed 1/64" Outside The Right Side Back Fold Edge Line.

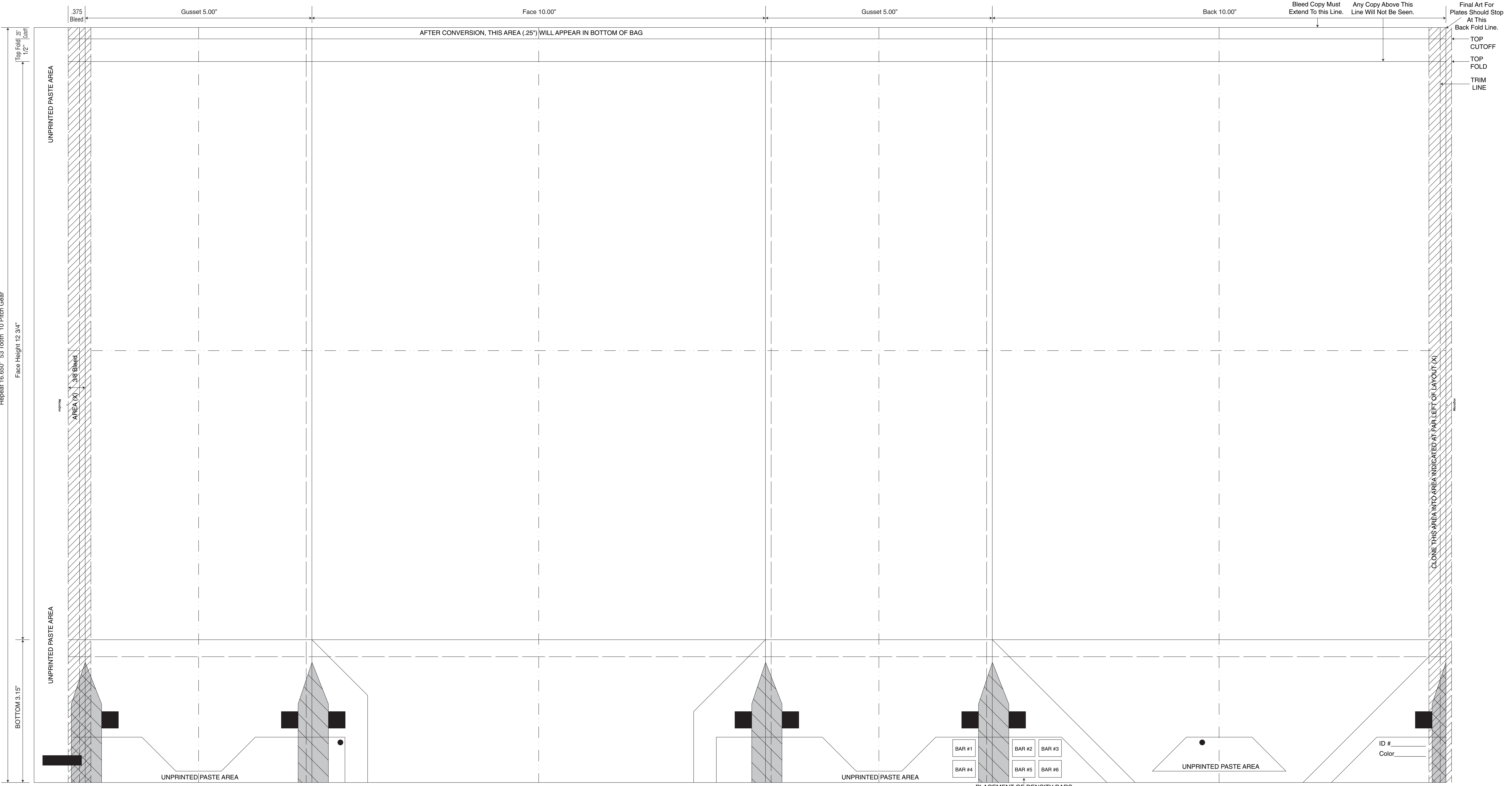
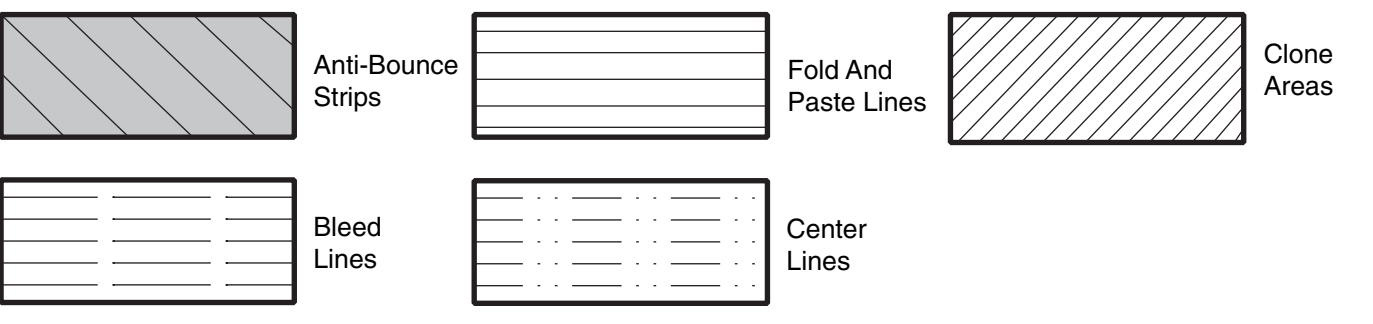
**BORDER DESIGNS**  
Because Of Machine Movement In Bag Conversion, Copy Should Be Placed At Least 1/4" From Fold Lines Or Edges. In The Top Area, Use 1/2" Bleed. Border Designs Should Be Kept 1/2" From Fold Edges, Top Cutoff And Bottom Fold.

PLEASE NOTE: All Screen, Half-Tones And Process Jobs Must Be Reviewed By Duro's Graphic Printing Division Before Preparing Art.

**This Proof is For Copy, Elements And Position Only. NOT FOR COLOR APPROVAL.**

Fill All 5 Anti-Bounce Area With 40% Screen In All Colors Containing Screens

Full Panel Print Must Bleed Into Top & Bottom Panel Of Bag, Which Is Indicated On Template



Cut Flap 7 3/16"  
Printed Flap 8 3/16"  
**This Proof is For Copy, Elements And Position Only. NOT FOR COLOR APPROVAL.**



ID # \_\_\_\_\_  
Color \_\_\_\_\_

Final Art For Plates Should Stop At This Back Fold Line.  
TOP CUTOFF  
TOP FOLD  
TRIM LINE

CLONE THIS AREA INTO AREA INDICATED AT FAR LEFT OF LAYOUT (X)

Repeat 16.650" 53 Tooth 10 Pitch Gear  
Face Height 12.3/4"

Top Fold .25"  
1/2" (total)

BOTTOM 3.15"

.375 Bleed

Gusset 5.00"

Face 10.00"

Gusset 5.00"

Back 10.00"

Bleed Copy Must Extend To this Line.

Any Copy Above This Line Will Not Be Seen.

AFTER CONVERSION, THIS AREA (.25") WILL APPEAR IN BOTTOM OF BAG

AREA (X)  
3/8 Bleed

Microdot

UNPRINTED PASTE AREA

UNPRINTED PASTE AREA

UNPRINTED PASTE AREA

UNPRINTED PASTE AREA