



1 Duro Way
Walton, KY 41094
CREATED BY: B. Wallrawe
TECHNICAL:
Starting Web: 41.25" Finished Web 41.00"

DESIGN GROUP:
Shopper Series
**Modular Macrame
Slit Top Mart
13 x 7 x 17**
DATE: 3/26/04 SCALE: FULL

This .020" Microdot Is For Flexographic Printing Only.
It Should Be Placed On Every Color At The
Center Of Largest Copy (Top To Bottom). The Left Microdot
Gets Placed 1/64" Inside The Paste Area.
The Right Microdot Gets Placed 1/64" Outside
The Right Side Back Fold Edge Line.

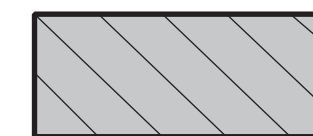
BORDER DESIGNS
Because Of Machine Movement In Bag
Conversion, Copy Should Be Placed At
Least 1/4" From Fold Lines Or Edges.
In The Top Area, Use 1/2" Bleed.
Border Designs Should Be Kept 1/2" From
Fold Edges, Top Cutoff And Bottom Fold.

PLEASE NOTE: All Screen, Half-Tones And
Process Jobs Must Be Reviewed By Duro's
Graphic Printing Division Before Preparing Art.

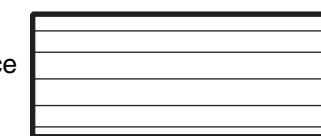
**This Proof is For Copy,
Elements And Position Only.
NOT FOR COLOR APPROVAL.**

Fill All 5 Anti-Bounce Area With
40% Screen In All Colors
Containing Screens

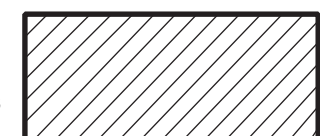
Full Panel Print
Must Bleed Into
Top & Bottom Panel Of Bag,
Which Is Indicated On Template



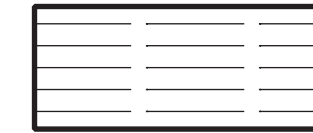
Anti-Bounce
Strips



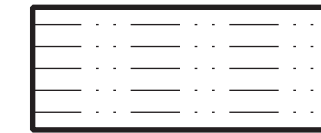
Fold And
Paste Lines



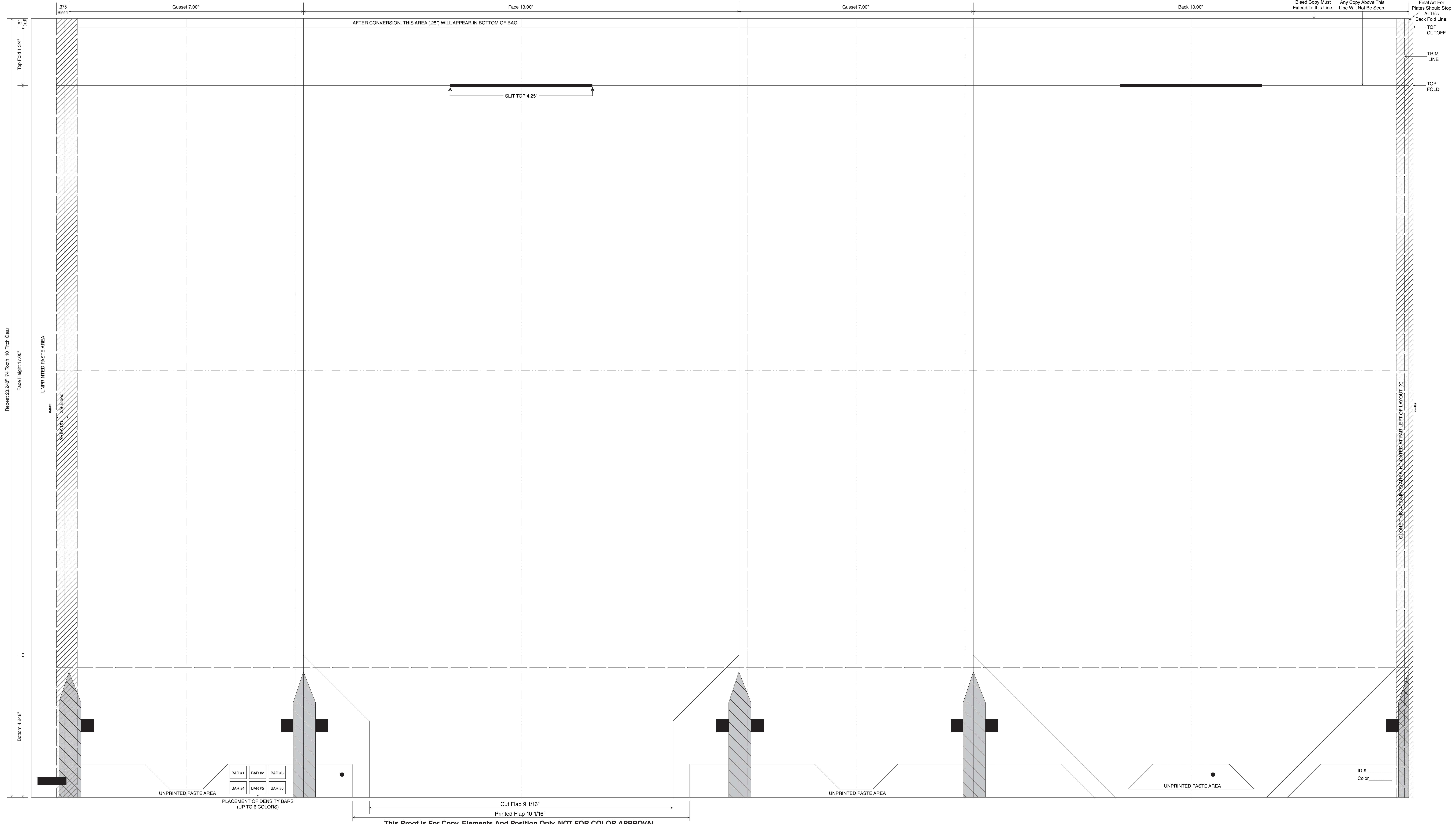
Clone
Areas



Bleed
Lines



Center
Lines



Paper: 23.248" x 74 Tooth 10 Pitch Star
Face Height 17.00"

UNPRINTED PASTE AREA

.375" Bleed

Bottom 4.248"

UNPRINTED PASTE AREA

BAR #1 BAR #2 BAR #3
BAR #4 BAR #5 BAR #6

PLACEMENT OF DENSITY BARS
(UP TO 6 COLORS)

Cut Flap 9 1/16"

Printed Flap 10 1/16"

UNPRINTED PASTE AREA

UNPRINTED PASTE AREA

ID #

Color

CLONE THIS AREA INTO AREA INDICATED AT PART OF LAYOUT (X)

Final Art For
Plates Should Stop
At This
Back Fold Line.

TOP
CUTOFF

TRIM
LINE

TOP
FOLD

Bleed Copy Must
Extend To This Line.

Any Copy Above This
Line Will Not Be Seen.

This Proof is For Copy, Elements And Position Only. NOT FOR COLOR APPROVAL.