

DESIGN GROUP:
Shopper Series

Macrame Jr Cargo
18 x 7 x 16 3/4

1 Duro Way
Walton, KY 41094
CREATED BY: B. Wallrave
TECHNICAL:
Starting Web: 51.25" Finished Web 51.00"

DATE: 10/18/05 SCALE: FULL

This .020" Microdot is For Flexographic Printing Only. It Should Be Placed On Every Color At The Center Of Largest Copy (Top To Bottom). The Left Microdot Gets Placed 1/64" Inside The Paste Area. The Right Microdot Gets Placed 1/84" Outside The Right Side Back Fold Edge Line.

BORDER DESIGNS
Because Of Machine Movement In Bag Conversion, Copy Should Be Placed At Least 1/4" From Fold Lines Or Edges. In The Top Area, Use 1/2" Bleed. Border Designs Should Be Kept 1/2" From Fold Edges, Top Cutoff And Bottom Fold.

PLEASE NOTE: All Screen, Half-Tones And Process Jobs Must Be Reviewed By Duro's Graphic Printing Division Before Preparing Art.

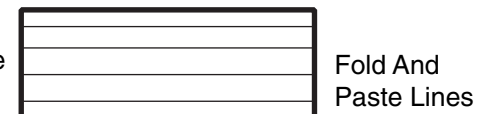
This Proof is For Copy, Elements And Position Only. NOT FOR COLOR APPROVAL.

Fill All S Anti-Bounce Area With 40% Screen In All Colors Containing Screens

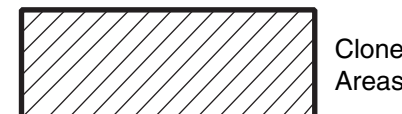
Full Panel Print Must Bleed Into Top & Bottom Panel Of Bag, Which Is Indicated On Template



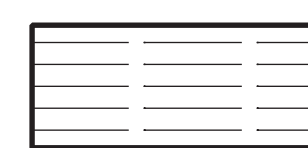
Anti-Bounce Strips



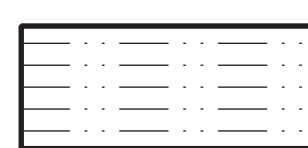
Fold And Paste Lines



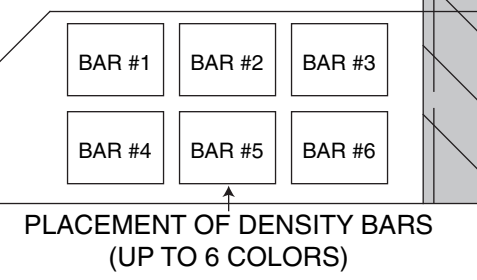
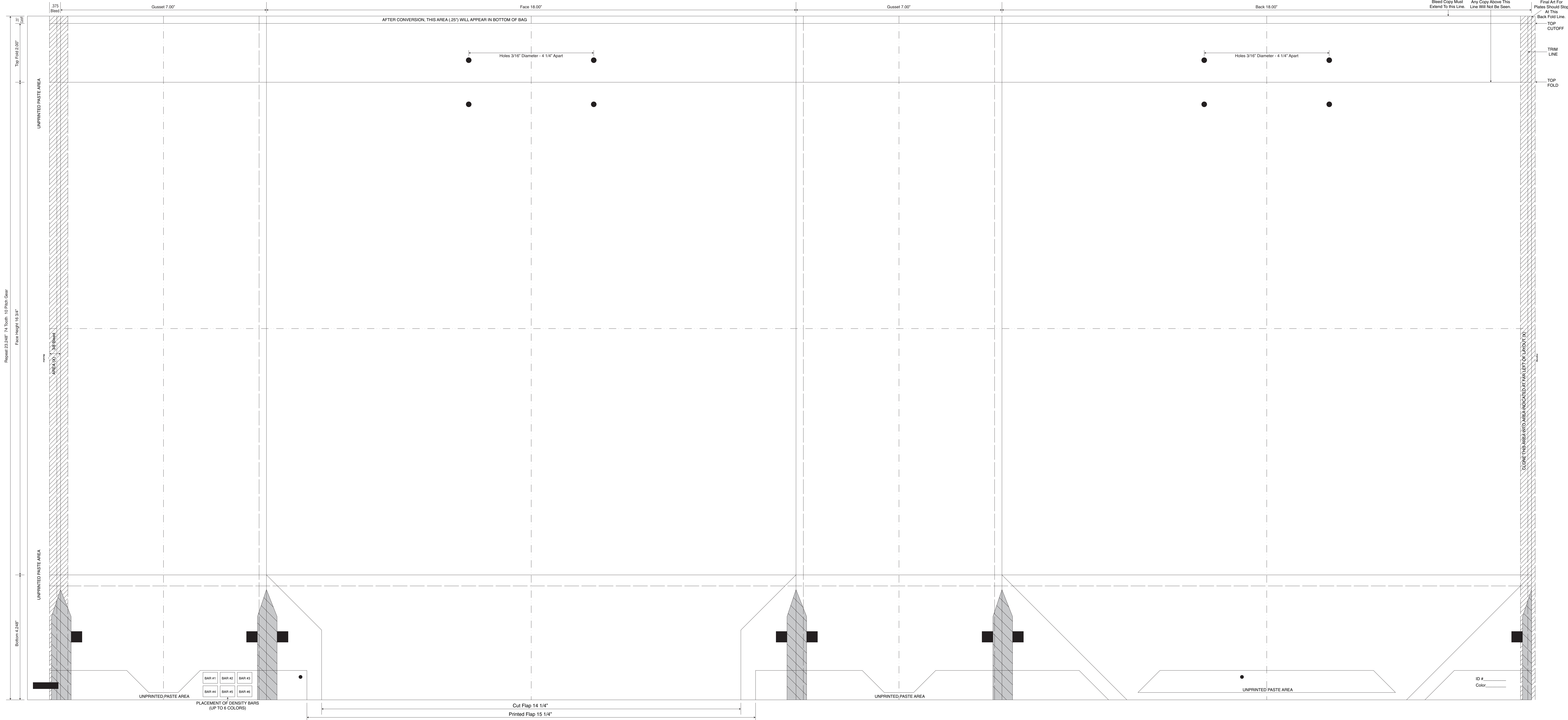
Clone Areas



Bleed Lines



Center Lines



Cut Flap 14 1/4"
Printed Flap 15 1/4"

This Proof is For Copy, Elements And Position Only. NOT FOR COLOR APPROVAL.

ID # _____
Color _____