



1 Duro Way
Walton, KY 41094

CREATED BY: B. Wallrawe

TECHNICAL:

Starting Web: 18.25" Finished Web 18.00"

DESIGN GROUP:
Shopper Series

Ultra Modular Gem
5 1/4" x 3 1/4" x 8"

DATE: 10/18/05

SCALE: FULL

This .020" Microdot Is For Flexographic Printing Only. It Should Be Placed On Every Color At The Center Of Largest Copy (Top To Bottom). The Left Microdot Gets Placed 1/64" Inside The Paste Area. The Right Microdot Gets Placed 1/64" Outside The Right Side Back Fold Edge Line.

BORDER DESIGNS
Because Of Machine Movement In Bag Conversion, Copy Should Be Placed At Least 1/4" From Fold Lines Or Edges. In The Top Area, Use 1/2" Bleed. Border Designs Should Be Kept 1/2" From Fold Edges, Top Cutoff And Bottom Fold.

PLEASE NOTE: All Screen, Half-Tones And Process Jobs Must Be Reviewed Bt Duro's Graphic Printing Division Before Preparing Art.

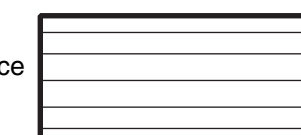
This Proof is For Copy, Elements And Position Only. NOT FOR COLOR APPROVAL.

Fill All 5 Anti-Bounce Area With 40% Screen In All Colors Containing Screens

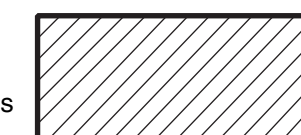
Full Panel Print Must Bleed Into Top & Bottom Panel Of Bag, Which Is Indicated On Template



Anti-Bounce Strips



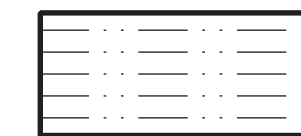
Fold And Paste Lines



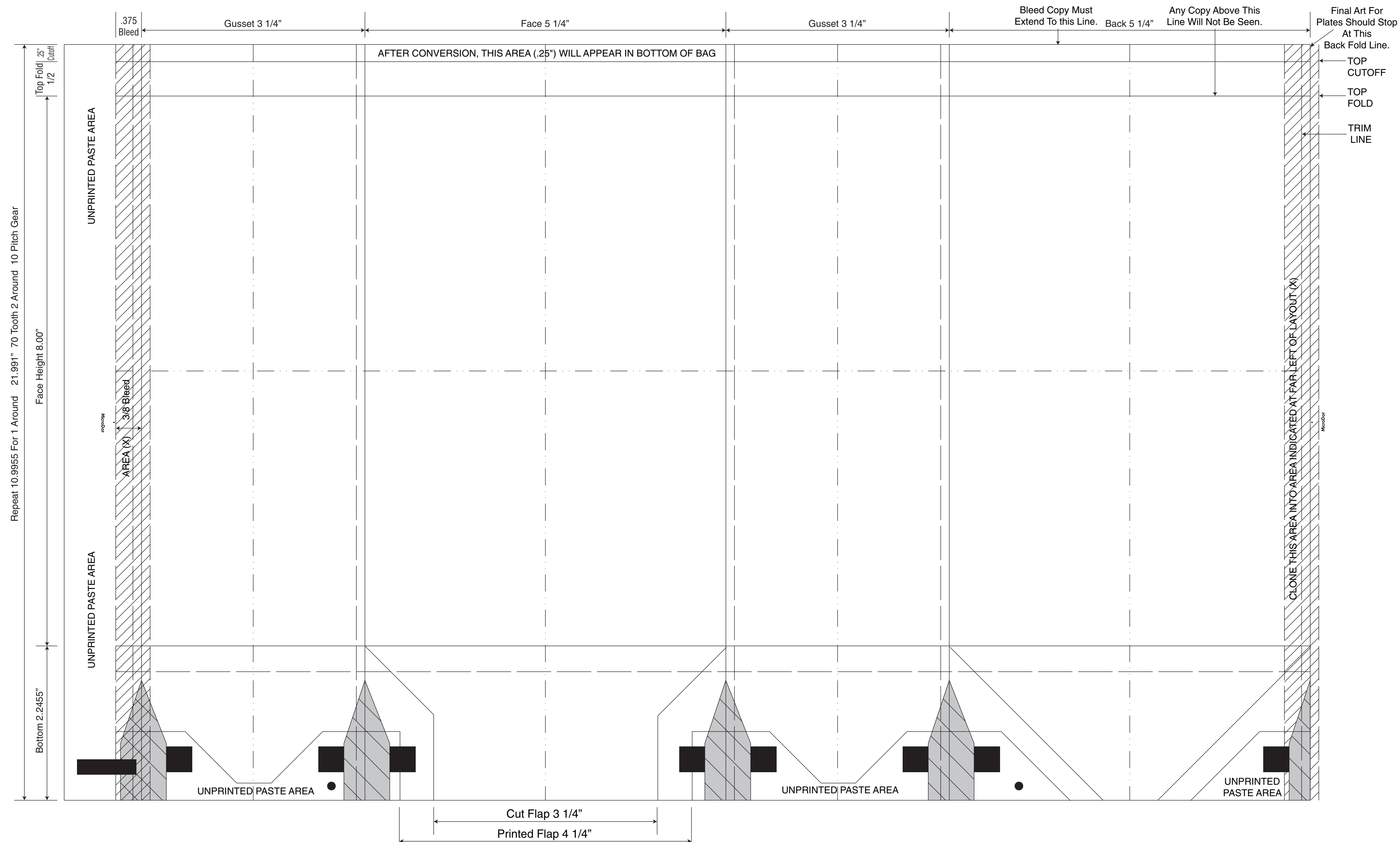
Clone Areas



Bleed Lines



Center Lines



This Proof is For Copy, Elements And Position Only. NOT FOR COLOR APPROVAL.