



1 Duro Way
Walton, KY 41094
CREATED BY: B. Wallrawe
TECHNICAL:
Starting Web: 31.25" Finished Web 31.00"

DESIGN GROUP:
Shopper Series

JV Slit Emerald
10 x 5 x 10

DATE: 10/18/05 SCALE: FULL

This .020" Microdot Is For Flexographic Printing Only. It Should Be Placed On Every Color At The Center Of Largest Copy (Top To Bottom). The Left Microdot Gets Placed 1/64" Inside The Paste Area. The Right Microdot Gets Placed 1/64" Outside The Right Side Back Fold Edge Line.

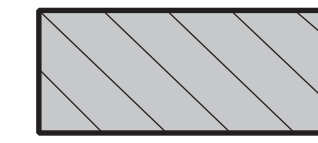
BORDER DESIGNS
Because Of Machine Movement In Bag Conversion, Copy Should Be Placed At Least 1/4" From Fold Lines Or Edges. In The Top Area, Use 1/2" Bleed. Border Designs Should Be Kept 1/2" From Fold Edges, Top Cutoff And Bottom Fold.

PLEASE NOTE: All Screen, Half-Tones And Process Jobs Must Be Reviewed Bt Duro's Graphic Printing Division Before Preparing Art.

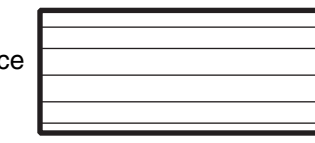
This Proof is For Copy, Elements And Position Only. NOT FOR COLOR APPROVAL.

Fill All 5 Anti-Bounce Area With 40% Screen In All Colors Containing Screens

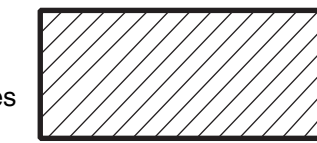
Full Panel Print Must Bleed Into Top & Bottom Panel Of Bag, Which Is Indicated On Template



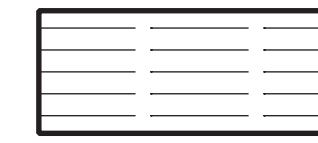
Anti-Bounce Strips



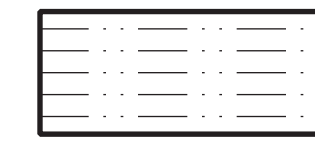
Fold And Paste Lines



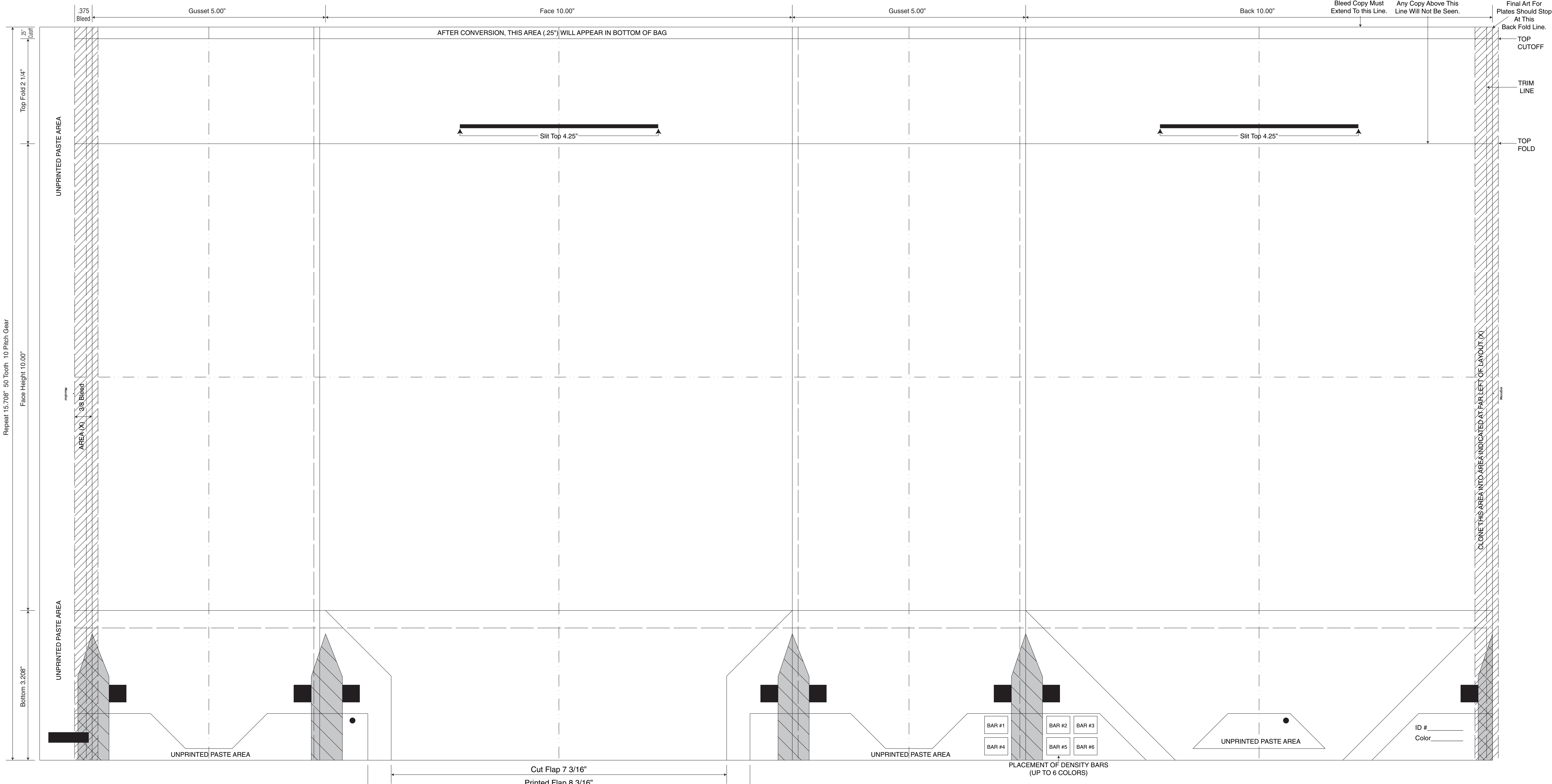
Clone Areas



Bleed Lines



Center Lines



Repeat 15.708" 50 Tooth 10 Pitch Gear
Face Height 10.00"

Top Fold 2 1/4"

Bottom 3.208"

This Proof is For Copy, Elements And Position Only. NOT FOR COLOR APPROVAL.

Final Art For Plates Should Stop At This Back Fold Line.
TOP CUTOFF
TRIM LINE
TOP FOLD

CLONE THIS AREA INTO AREA INDICATED AT FAR LEFT OF LAYOUT (X)

BAR #1
BAR #2
BAR #3
BAR #4
BAR #5
BAR #6

UNPRINTED PASTE AREA

ID # _____
Color _____

Cut Flap 7 3/16"

Printed Flap 8 3/16"

AFTER CONVERSION, THIS AREA (.25") WILL APPEAR IN BOTTOM OF BAG

Bleed Copy Must Extend To this Line. Any Copy Above This Line Will Not Be Seen.