

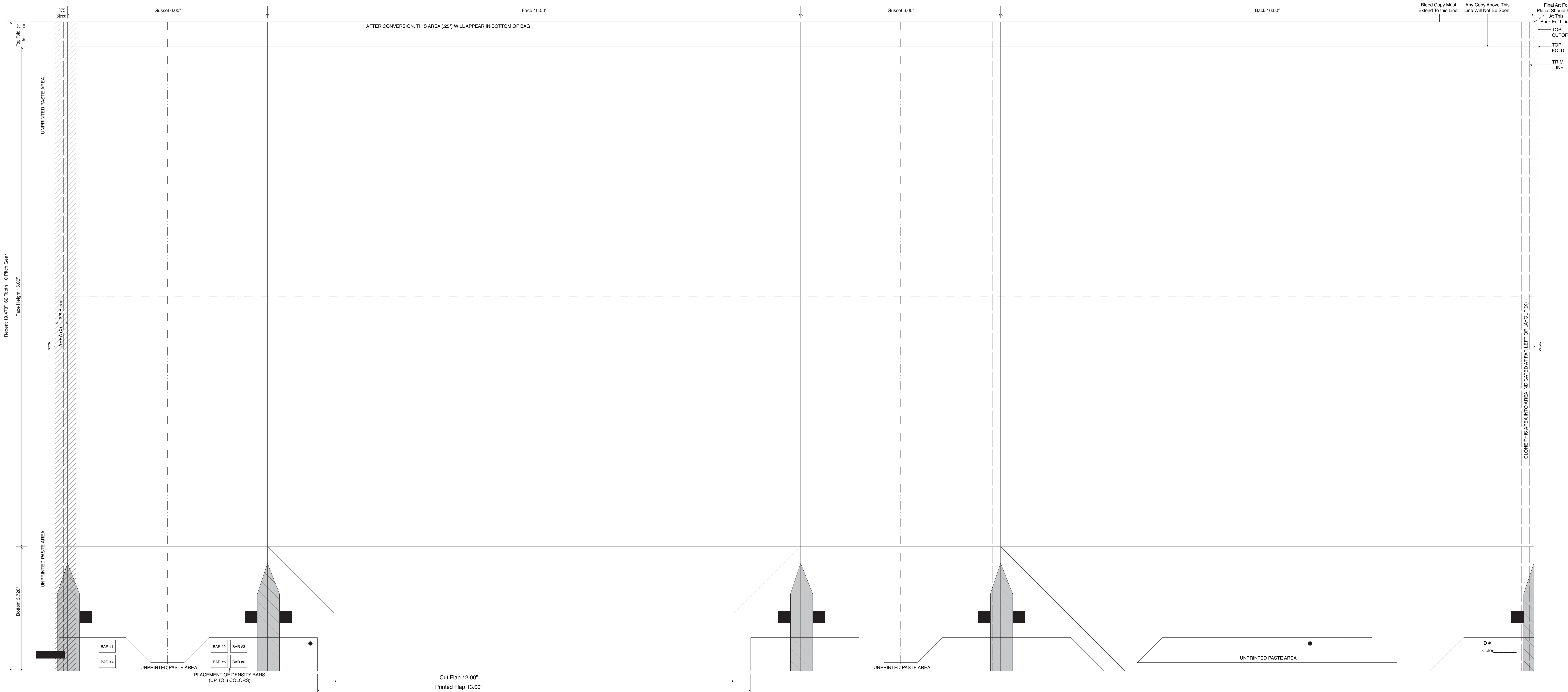
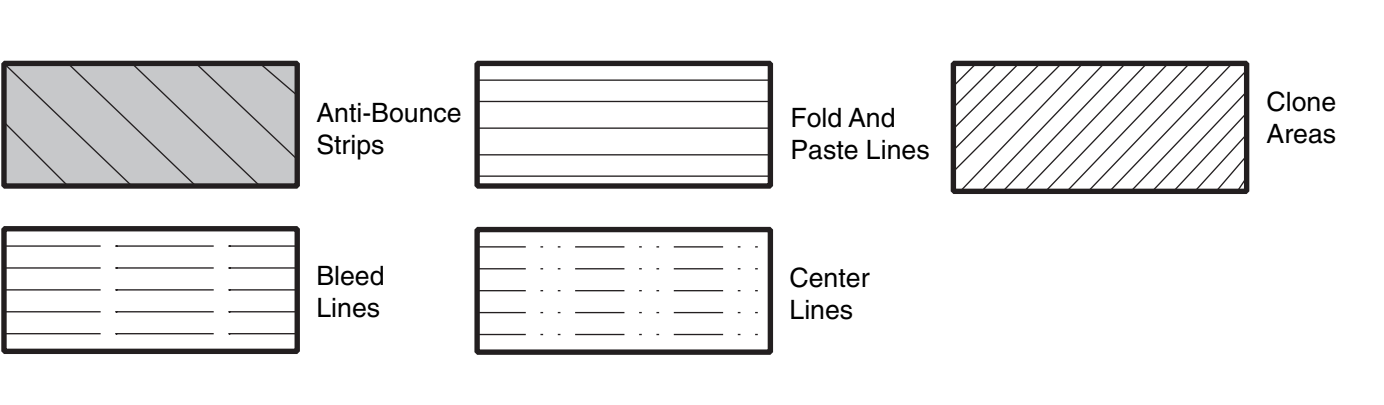
DESIGN GROUP:
Shopper Series
Ultra Modular Debonair
16 x 6 x 15
DATE: 5/10/04 SCALE: FULL

This .020" Microdot Is For Flexographic Printing Only. It Should Be Placed On Every Color At The Center Of Largest Copy (Top To Bottom). The Left Microdot Gets Placed 1/64" Inside The Paste Area. The Right Microdot Gets Placed 1/64" Outside The Right Side Back Fold Edge Line.

BORDER DESIGNS
Because Of Machine Movement In Bag Conversion, Copy Should Be Placed At Least 1/4" From Fold Lines Or Edges. In The Top Area, Use 1/2" Bleed. Border Designs Should Be Kept 1/2" From Fold Edges, Top Cutoff And Bottom Fold.

PLEASE NOTE: All Screen, Half-Tones And Process Jobs Must Be Reviewed By Duro's Graphic Printing Division Before Preparing Art.
This Proof is For Copy, Elements And Position Only. NOT FOR COLOR APPROVAL.

Fill All 5 Anti-Bounce Area With 40% Screen In All Colors Containing Screens
Full Panel Print Must Bleed Into Top & Bottom Panel Of Bag, Which is Indicated On Template



Repeat 19.478" @ 2 Tooth 10 Pitch Gear
Face Height 15.00"

Bottom 3.728"

Top Fold 1/2" 50"

375 Bleed

375 Bleed

Gusset 6.00"

Face 16.00"

Gusset 6.00"

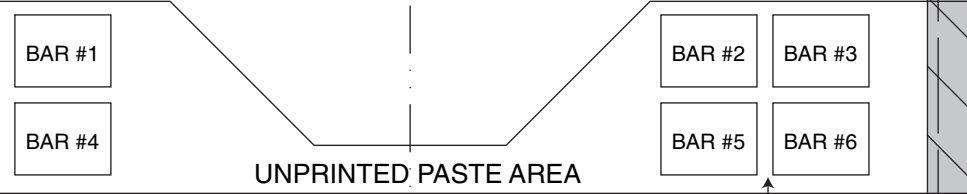
Back 16.00"

AFTER CONVERSION, THIS AREA (.25") WILL APPEAR IN BOTTOM OF BAG

Bleed Copy Must Extend To this Line. Any Copy Above This Line Will Not Be Seen.

Final Art For Plates Should Stop At This Back Fold Line.
TOP CUTOFF
TOP FOLD
TRIM LINE

CLONE THIS AREA INTO AREA INDICATED AT FAR LEFT OF LAYOUT (X)



PLACEMENT OF DENSITY BARS (UP TO 6 COLORS)

Cut Flap 12.00"
Printed Flap 13.00"

ID # _____
Color _____

This Proof is For Copy, Elements And Position Only. NOT FOR COLOR APPROVAL.