



1 Duro Way  
Walton, KY 41094  
CREATED BY: B. Wallrawe  
TECHNICAL:  
Starting Web: 45.25" Finished Web 45.00"

DESIGN GROUP:  
Shopper Series  
**Macrame Debonair**  
16 x 6 x 15 3/4

DATE: 5/11/04 SCALE: FULL

This .020" Microdot Is For Flexographic Printing Only. It Should Be Placed On Every Color At The Center Of Largest Copy (Top To Bottom). The Left Microdot Gets Placed 1/64" Inside The Paste Area. The Right Microdot Gets Placed 1/64" Outside The Right Side Back Fold Edge Line.

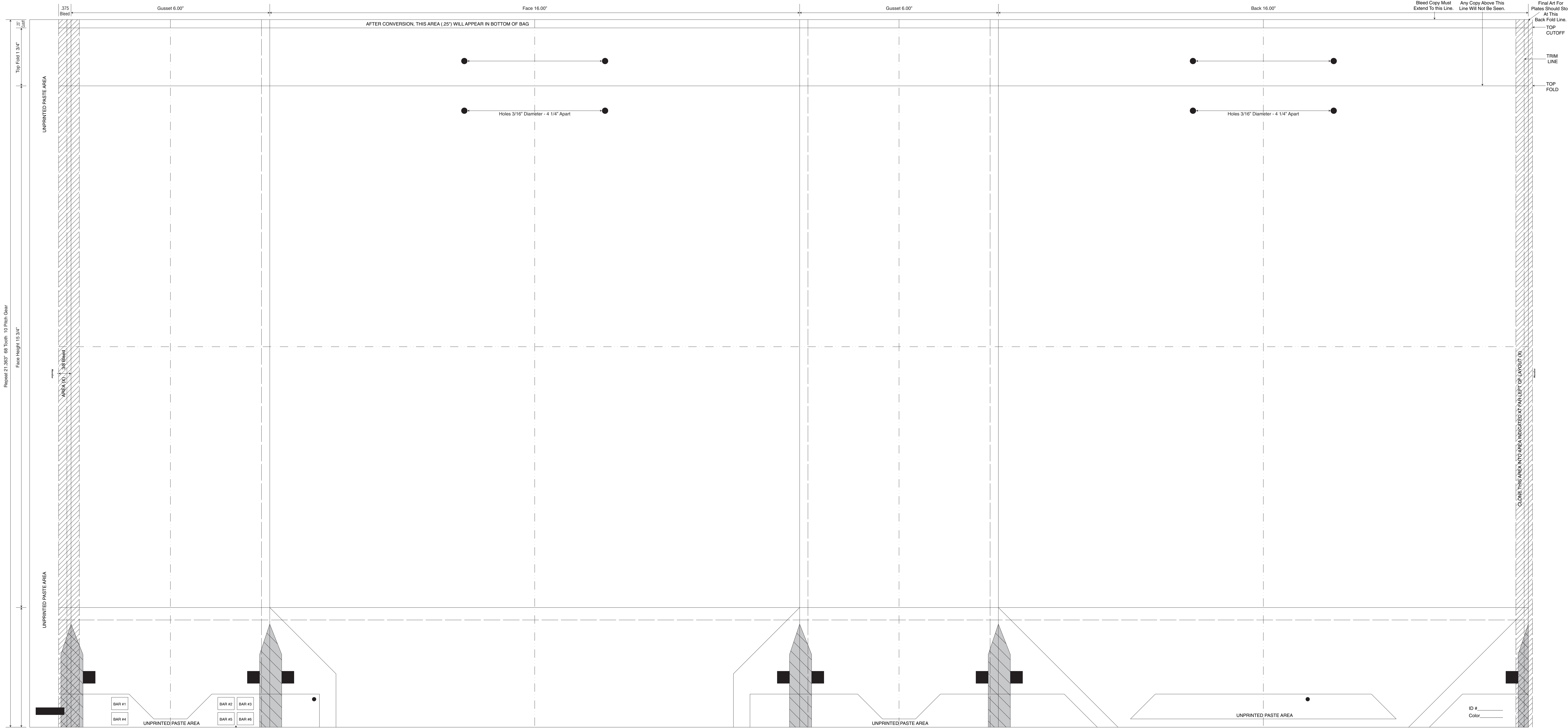
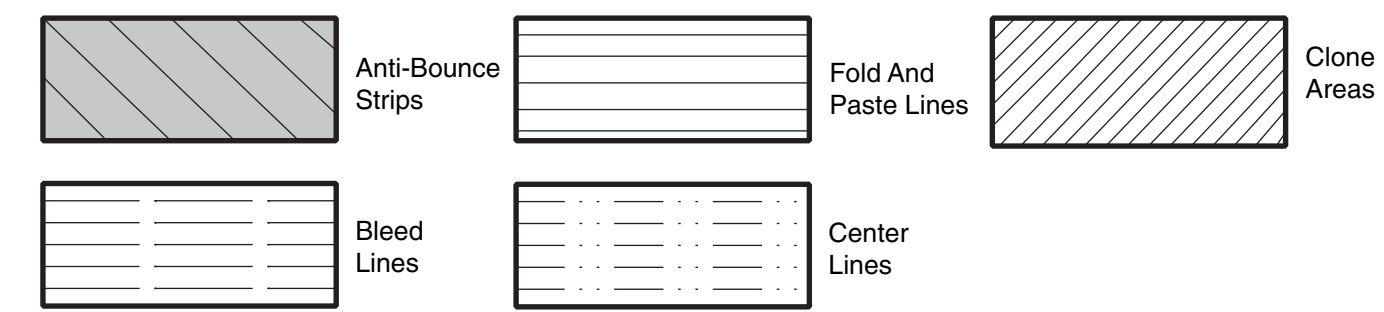
**BORDER DESIGNS**  
Because Of Machine Movement In Bag Conversion, Copy Should Be Placed At Least 1/4" From Fold Lines Or Edges. In The Top Area, Use 1/2" Bleed. Border Designs Should Be Kept 1/2" From Fold Edges, Top Cutoff And Bottom Fold.

PLEASE NOTE: All Screen, Half-Tones And Process Jobs Must Be Reviewed By Duro's Graphic Printing Division Before Preparing Art.

**This Proof is For Copy, Elements And Position Only. NOT FOR COLOR APPROVAL.**

Fill All 5 Anti-Bounce Area With 40% Screen In All Colors Containing Screens

Full Panel Print Must Bleed Into Top & Bottom Panel Of Bag, Which Is Indicated On Template



Repeat at 3/8" 68 Tooth 10 Pitch Gear  
Face Height 15.3/4"

PLACEMENT OF DENSITY BARS  
(UP TO 6 COLORS)

Cut Flap 120.00"  
Printed Flap 13.00"

This Proof is For Copy, Elements And Position Only. NOT FOR COLOR APPROVAL.

ID # \_\_\_\_\_  
Color \_\_\_\_\_