



1 Duro Way
Walton, KY 41094
CREATED BY: B. Wallrawe
TECHNICAL:
Starting Web: 51.25" Finished Web 51.00"

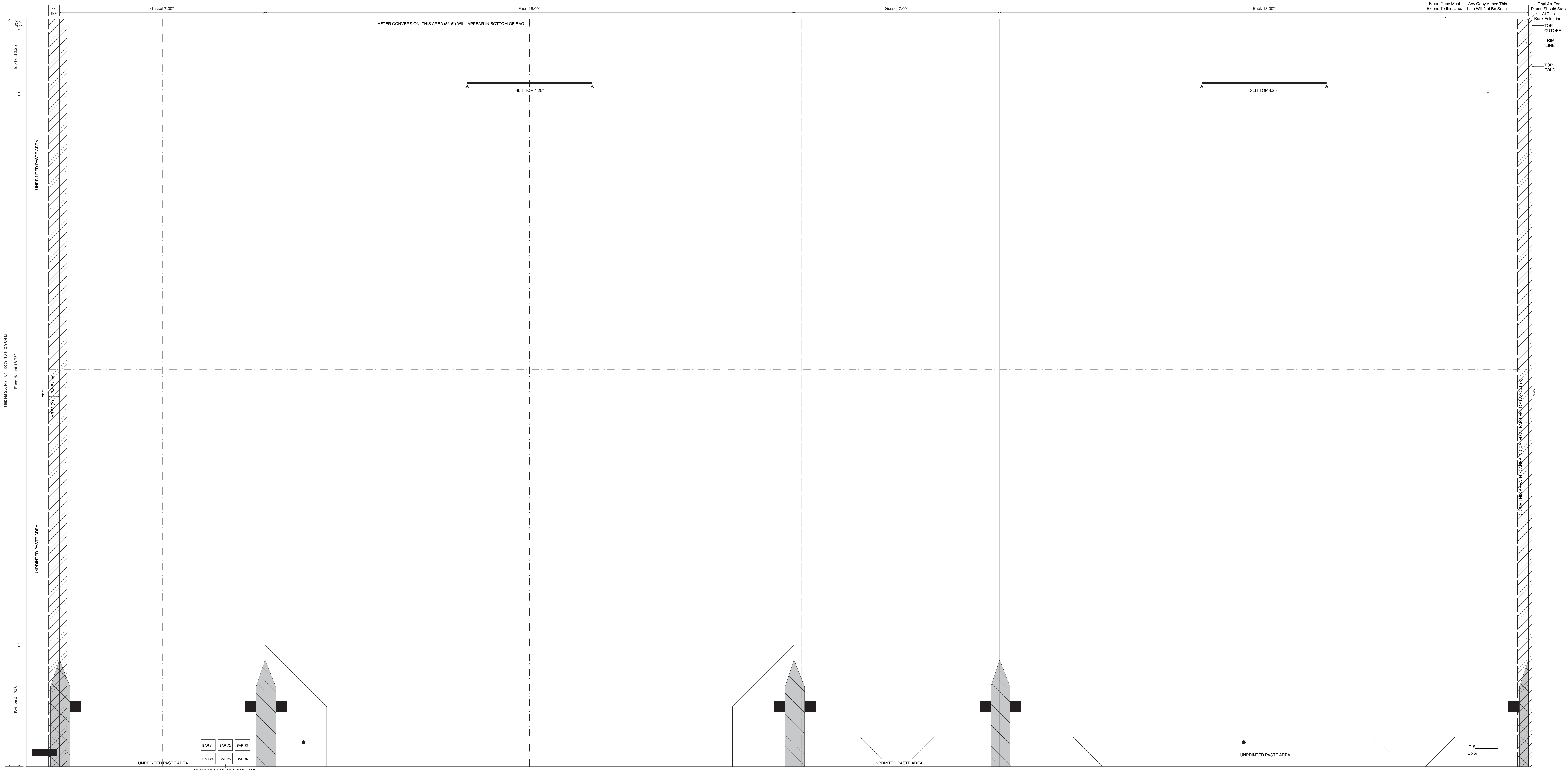
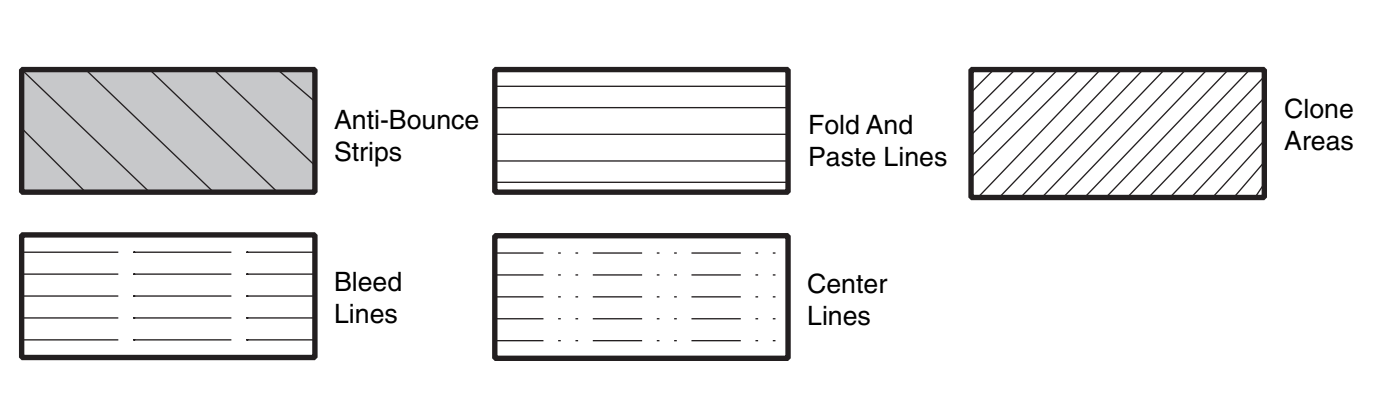
DESIGN GROUP:
Shopper Series
J V Silt Cargo
18 x 7 x 18.75
DATE: 5/7/04 SCALE: FULL

This 020" Microdot is For Flexographic Printing Only. It Should Be Placed On Every Color At The Center Of Largest Copy (Top To Bottom). The Left Microdot Gets Placed 1/8" Inside The Paste Area. The Right Microdot Gets Placed 1/8" Outside The Right Side Back Fold Edge Line.

BORDER DESIGNS
Because Of Machine Movement In Bag Conversion, Copy Should Be Placed At Least 1/4" From Fold Lines Or Edges. In The Top Area, Use 1/2" Bleed. Border Designs Should Be Kept 1/2" From Fold Edges, Top Cutoff And Bottom Fold.

PLEASE NOTE: All Screen, Half-Tones And Process Jobs Must Be Reviewed By Duro's Graphic Printing Division Before Preparing Art.
This Proof is For Copy, Elements And Position Only. NOT FOR COLOR APPROVAL.

Fill All 5 Anti-Bounce Area With 40% Screen In All Colors Containing Screens
Full Panel Print Must Bleed Into Top & Bottom Panel Of Bag, Which Is Indicated On Template



Repeat 25.477" 81 Tooth 10 Pitch Gear
Face Height 18.75"

Top Fold 2.25"

Bottom 1.500"

Gusset 7.00"

Face 18.00"

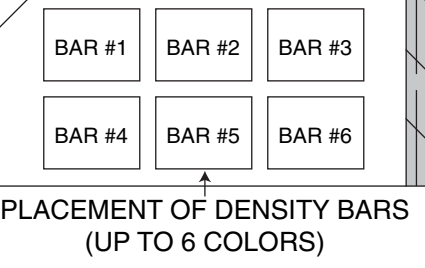
Gusset 7.00"

Back 18.00"

Bleed Copy Must Extend To This Line.

Any Copy Above This Line Will Not Be Seen.

Final Art For Plates Should Stop At This Back Fold Line.
TOP CUTOFF
TRIM LINE
TOP FOLD



PLACEMENT OF DENSITY BARS (UP TO 6 COLORS)

Cut Flap 13 13/16"
Printed Flap 14 13/16"

This Proof is For Copy, Elements And Position Only. NOT FOR COLOR APPROVAL.

ID # _____
Color _____