



1 Duro Way
Walton, KY 41094
CREATED BY: B. Wallrawe
TECHNICAL:
Starting Web: 34 3/4" Finished Web 34 1/2"

DESIGN GROUP:
Shopper Series
**Knotless Macrame
Slit Top Bistro**
10 x 6 3/4 x 12
DATE: 3/7/06 SCALE: FULL

This .020" Microdot Is For Flexographic Printing Only. It Should Be Placed On Every Color At The Center Of Largest Copy (Top To Bottom). The Left Microdot Gets Placed 1/64" Inside The Paste Area. The Right Microdot Gets Placed 1/64" Outside The Right Side Back Fold Edge Line.

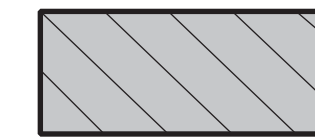
BORDER DESIGNS
Because Of Machine Movement In Bag Conversion, Copy Should Be Placed At Least 1/4" From Fold Lines Or Edges. In The Top Area, Use 1/2" Bleed. Border Designs Should Be Kept 1/2" From Fold Edges, Top Cutoff And Bottom Fold.

PLEASE NOTE: All Screen, Half-Tones And Process Jobs Must Be Reviewed By Duro's Graphic Printing Division Before Preparing Art.

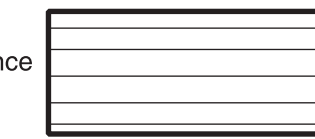
This Proof is For Copy, Elements And Position Only. NOT FOR COLOR APPROVAL.

Fill All 5 Anti-Bounce Area With 40% Screen In All Colors Containing Screens

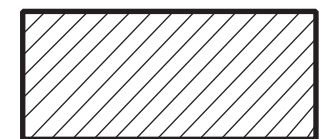
Full Panel Print Must Bleed Into Top & Bottom Panel Of Bag, Which Is Indicated On Template



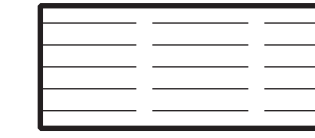
Anti-Bounce Strips



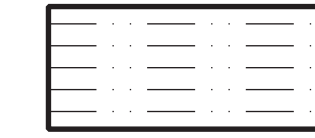
Fold And Paste Lines



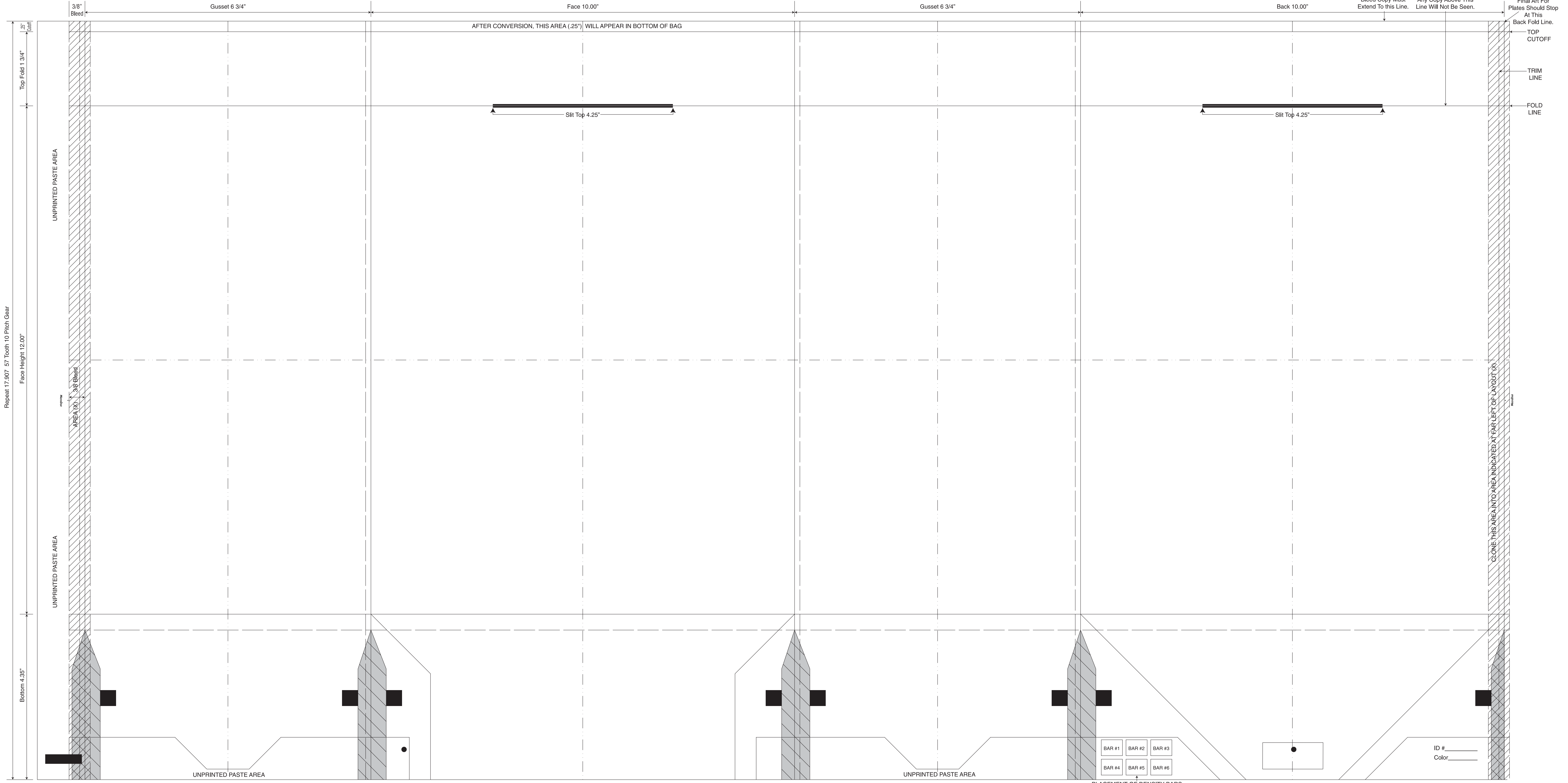
Clone Areas



Bleed Lines



Center Lines



BAR #1	BAR #2	BAR #3
BAR #4	BAR #5	BAR #6

PLACEMENT OF DENSITY BARS (UP TO 6 COLORS)

ID # _____
Color _____

Cut Flap 7 3/16"
Printed Flap 8 3/16"
This Proof is For Copy, Elements And Position Only. NOT FOR COLOR APPROVAL.